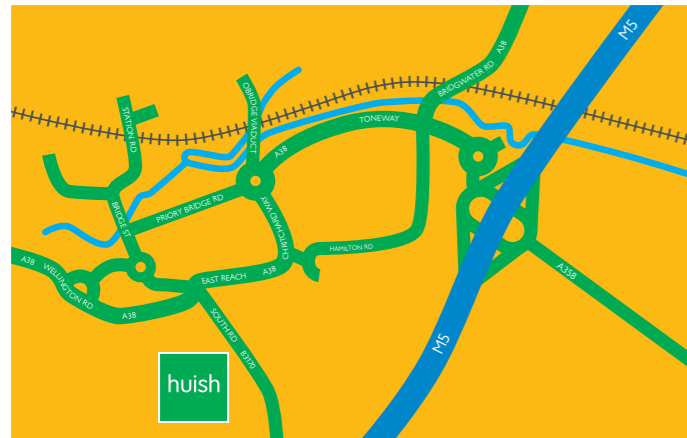


OPEN EVENTS

- Saturday 12th October 2024
- Monday 14th October 2024
- Wednesday 30th April 2025



Richard Huish College, South Road, Taunton, Somerset, TA1 3DZ.
T 01823 320800 | hello@huish.ac.uk | www.huish.ac.uk



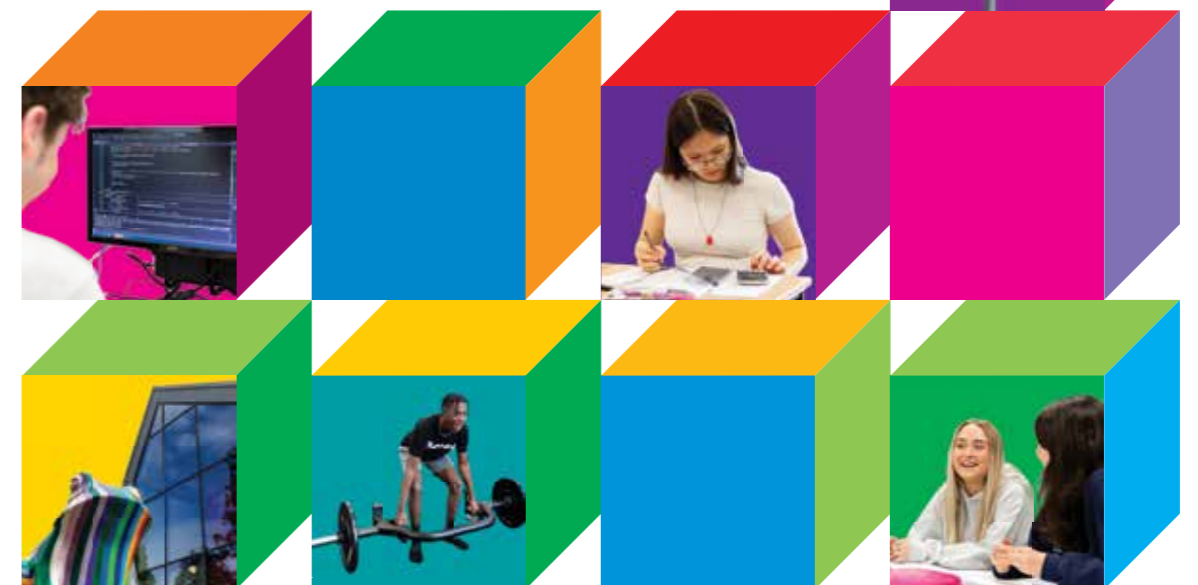
For information in other formats please call 01823 320800.



RICHARD HUISH COLLEGE PROSPECTUS 2025/26



PROSPECTUS 2025/26





360°
VIRTUAL CAMPUS TOUR



WELCOME



Studying at Huish is something that we hope you will remember forever. With our wide range of course choices and EnRICH programme, you will be part of a vibrant, inclusive and successful learning community.

We provide a bridge between school and your future, and pride ourselves on providing an exceptional, student-centred Sixth Form experience, whether you are studying Academic, Vocational or Apprenticeship qualifications.

Studying with us is a rewarding, enriching experience. Huish is one of the best Sixth Form Colleges in the country for outcomes and more importantly for the significant progress that students make whilst they are with us.

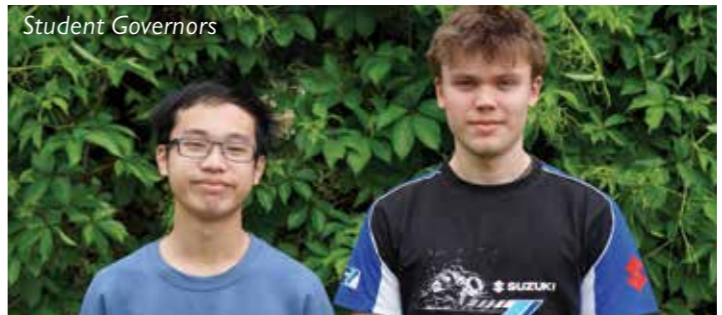
We have high expectations of each student and our passionate staff work closely with you to ensure you achieve the best you can. We are proud of what you achieve and are committed to challenging you to become lifelong learners and reflective critical thinkers who are well-equipped to make a positive contribution to the world.

I hope that this prospectus gives you a flavour of what being a student at Huish is like and some guidance about how to begin exploring your post-16 choices. You can follow the QR codes throughout the prospectus to access more details and the latest information. We would be delighted to welcome you into our college community and look forward to meeting you soon.

Emma Fielding
Principal



STUDENT VOICE



Hello. We are Dickson and Jacob, your Student Governors. We understand the transition to college can feel intimidating but we're here to ensure your transition is as seamless as possible.

Huish is a highly diverse and inclusive community that welcomes students from across the world. Huish offers a wide range of Study Programmes, so there's something for everyone. The Teachers and Tutors are all passionate about their subjects/roles and are willing to help and support you. The College strives for students to achieve their best and go above and beyond what is expected of them.

We understand studying can be overwhelming, that's why Huish provides a wide variety of extracurricular activities, named 'EnRICH', encouraging students to get out of their comfort zone and try something new, all while meeting and interacting with new people.

Huish also provides many different types of support for students. This includes mental health, finance and technology support. This is to ensure each student has an equal opportunity to perform to their best.

We are proud to have this community around us ready to welcome you in September. We hope you're as excited as we are.

Jacob Peacock and Dickson Yiu
Student Governors



WHAT MAKES HUISH SPECIAL?

INSPIRATIONAL TEACHING

Our specialist teachers are passionate about your education and with their support you can achieve the best outcome. Our teachers engage in a vibrant professional learning community, using the best evidence-informed approaches to teaching, learning and assessment to keep them at the top of their professional game.

UNIQUE STUDY PROGRAMMES

With around 50 courses to choose from we can help you find the right options for you. Select A Levels, Vocational qualifications, or a mixture of both, to find a learning style that suits your strengths. See page 8.



FANTASTIC FACILITIES

We consistently develop our campus to provide state-of-the-art facilities. Discover more about our technical studios, computing suites, and sports additions on page 20. We also have plenty of study areas and social spaces to enjoy on campus.



DEDICATED TUTORING

Through our specialist pastoral tutoring system we will prepare you to navigate the new issues you'll face as you approach adulthood and your Tutor will get to know you as an individual, offering support and guidance for your academic pursuits, as well as your general wellbeing. See page 10.

EnRICH

You are sure to find something to tempt you in our EnRICH programme. Our extensive offer ranges from sport, music and the Duke of Edinburgh's Award, to debating, coding, and volunteering, to name just a few. We also have dedicated EnRICH days for everyone to get involved in. See page 12.

BOARDING ACCOMMODATION

Join the Oak House Family! Our affordable student accommodation is just a few minutes' walk from campus and can give you a taste of independent living. Full-time and flexi-boarding are available. See page 18.



LIFE AFTER HUISH

We have a specialist team that work in collaboration with the Pastoral Tutoring team to ensure you are supported and prepared for Higher Education, Apprenticeships, or the workplace. See page 15.



OUTSTANDING RESULTS

Our consistently excellent results are some of the best in the South West. Our students make significant progress whilst studying with us and many achieve beyond what they expected, opening an array of progression opportunities.



SPORTS ACADEMIES

We are passionate about sport and through our partnerships with Bristol Bears Rugby, Somerset Cricket Foundation and Huish Tigers Basketball, we can help you to develop your professional sporting career alongside top-quality academic study.



CHOOSING YOUR COURSES

Choosing the right combination of courses is important and can affect the options open to you in the future.

WE SUGGEST YOU CONSIDER THE FOLLOWING:

- Your aspirations
- Your interests and skills
- The subjects you enjoy
- The way you prefer to learn
- Any career plans
- Your expected achievements at GCSE
- The entry requirements of the course.

Take advice from people who know your capabilities, e.g. Teachers, your school’s Careers Advisor and your family. Follow the QR codes within this prospectus to find more detailed information about our courses. Remember, whilst these decisions are critical to your future, we are here to help. You can talk to us at Parents’ Evenings, Open Events and many other steps along the way.



| TYPE OF LEVEL 3 STUDY PROGRAMME | SUBJECTS STUDIED | QUALIFICATION OPTIONS | Weekly Tutorial + EnRICH |
|---|------------------|--|--------------------------|
| A Levels | 3 | <ul style="list-style-type: none"> ■ A Levels | |
| Mixed Programme | 3 | <ul style="list-style-type: none"> ■ A Levels ■ BTEC Extended Certificates ■ BTEC Foundation Diplomas ■ Applied Diplomas ■ Cambridge Technicals | |
| Vocational Qualification (equivalent to 3 A Levels) | 1 in-depth | <ul style="list-style-type: none"> ■ BTEC Extended Diploma ■ T Level | |



HOW MANY COURSES CAN I CHOOSE?

Level 3 students can study three subjects or a full-time course equivalent to three A Levels.

- Level 3 Study Programmes are two years in duration
- A Vocational BTEC Extended Certificate, Applied Diploma or Cambridge Technical is equivalent to an A Level, and a BTEC Foundation Diploma is equivalent to 1.5 A Levels
- A Vocational BTEC Extended Diploma/T Level is equivalent to three A Levels in value and lesson time.

You can request to add an AS Level, EPQ, or Core Maths qualification to one year of your Study Programme.

LEVEL 2 PATHWAY

If you have been unable to complete your GCSEs due to personal circumstances, or may not have achieved the grades required to access a Level 3 Study Programme, we offer clear progression pathways.

Select a Science, Social Science or Creative pathway to create a Study Programme equivalent to four GCSEs.

Level 2 Study Programmes are one year in duration.

Your programme will include specialist tutorial support, work experience, EnRICH opportunities, trips and team-building activities, to help develop your skills, confidence and qualifications for progression to Level 3 study.

- Level 2 Study Programmes are one year in duration.

CHOOSE A PATHWAY:

SCIENCE:
Combined Science (Trilogy) GCSE

SOCIAL SCIENCE:
Sociology GCSE
and a Higher Project Qualification

CREATIVE:
Creative Media
BTEC Extended Certificate

PLUS TWO ADDITIONAL QUALIFICATIONS:

- Mathematics GCSE*
- English Language GCSE*
- Business & Enterprise BTEC First Award
- Health and Social Care BTEC First Award
- Sport Certificate
- Sociology GCSE

*GCSE Maths/English Language is mandatory if you have not achieved a grade 9–4.

A TYPICAL STUDENT WEEK

Huish is a vibrant place to study and probably very different from your school. It is an excellent step towards your future university or working life. You are encouraged to develop independent study skills and we are committed to supporting you to achieve your goals.

WHAT IS THE TIMETABLE LIKE?

The College opens at 8.00am when the Huish Kitchen is open for breakfast and lessons start at 9.00am. On Monday, Tuesday, and Thursday the final lesson finishes at 4.40pm. Lessons finish at 3.30pm on Wednesday and 3.05pm on Friday with EnRICH activities available after. Your timetable can be designed to incorporate Sport EnRICH. Buses leave at 4.45pm.

For each of your subjects (single units) you will have a 1-hour 55-minute lesson and two 1-hour 30-minute lessons each week. In addition, you will attend a weekly 1-hour 30-minute tutorial session.

SAMPLE TIMETABLE

| TIME | MONDAY | TUESDAY | WEDNESDAY | THURSDAY | FRIDAY |
|---------------|--------------------|--------------------|-----------------|-------------------------------|-------------------------|
| 09.00 – 10.55 | | PSYCHOLOGY | BIOLOGY | | ENGLISH LITERATURE |
| 10.55 – 11.10 | | | BREAK TIME | | |
| 11.10 – 12.40 | | ENGLISH LITERATURE | | TUTORIAL | |
| 12.40 – 13.35 | | | LUNCH | | |
| 13.35 – 15.05 | PSYCHOLOGY | BIOLOGY | | HUISH 30 Independent Study | BIOLOGY |
| 15.05 – 15.10 | BREAK TIME | | SPORT ENRICH | BREAK TIME | (Lesson finishes 15.05) |
| 15.10 – 16.40 | ENGLISH LITERATURE | | | PSYCHOLOGY | |

TUTORIALS



Our specialist Tutor team will support you both with your academic pursuits and your general wellbeing. Your Tutor will be someone you can speak to about any matter related to college, or from your life outside Huish. They will guide you, helping you to achieve your goals.

Tutorial sessions focus on your wider personal development, including Health & Wellbeing, Study Skills, Progression and Monitoring & Reflection.

WHAT IS HUISH 30?

The Huish 30 represents the minimum number of hours you need to commit to college-related activities each week to ensure that you perform at your best. The 30 hours break down to:



- 15 hours spent in lessons. High attendance is directly linked to excellent results
- 12 hours on independent study, preparing you for your classes and completing set tasks and course assessments. One session is allocated in your timetable
- 3 or more hours in EnRICH and personal development activities, including your weekly tutorial.

The level of independent study required at college is significantly different to school and we will support you to manage your time effectively. Your timetable is designed so you can complete much of your independent study within the college day if you wish to. Your tutor and teachers will guide you on effective study techniques and share the latest educational research on high-impact revision strategies.

EnRICH

Turn the page to discover our EnRICH programme; these exciting opportunities are open to all students and give you the chance to explore your interests and build a greater variety of skills whilst you're with us.

huish EnRICH

PROGRESSION & EMPLOYABILITY | LIFE SKILLS | COMMUNITY & CHARITY | HEALTH & WELLBEING

All participate in the EnRICH programme. It supports your Progression & Employability, Life Skills, Community & Charity, and Health & Wellbeing. You can participate in lessons, tutorials and through our careers programme. Activities range from trips and visiting speakers to workshops and competitions. Students value the skills, knowledge and fun that EnRICH provides through its social, cultural and recreational experiences. It is a great way to meet new people and try new things.



PROGRESSION & EMPLOYABILITY



LIFE SKILLS



COMMUNITY & CHARITY

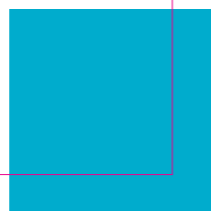
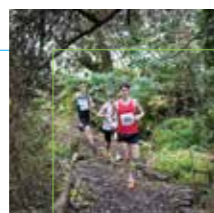


HEALTH & WELLBEING

HERE IS JUST A SELECTION OF WAYS YOU CAN GET INVOLVED:

EnRICH DAYS

Huish hosts two EnRICH days a year where lessons are suspended so everyone can participate in fun activities. You can select something you already enjoy or use the opportunity to try something new!



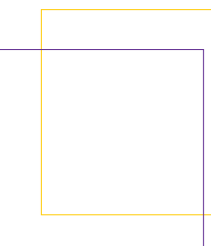
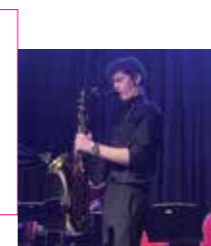
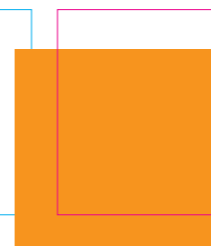
SPORT

Sport can play a major role in your life at Huish. You can play competitive sports or participate in social sports for your enjoyment. We work closely with the Huish Tigers Football and Basketball clubs to offer a competitive outlet outside of college. We have links with Somerset Cricket Foundation and Bristol Bears Rugby to support those wishing to access a performance pathway.



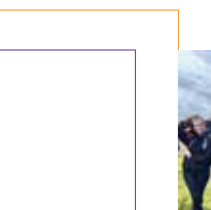
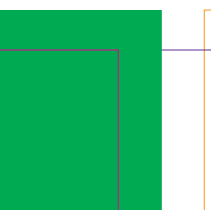
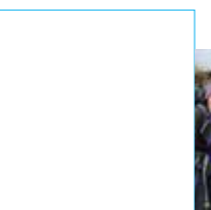
MUSIC AND PERFORMING ARTS

A variety of choirs and ensembles are on offer, including Orchestra and Choir. Specialist groups include Jazz Combo, Rock Choir, String Group, Samba Drumming and smaller ensembles. As well as regular concerts, you can act, sing, dance or assist with stage crafts in our theatre production.



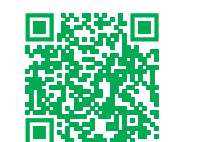
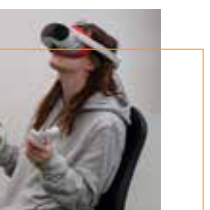
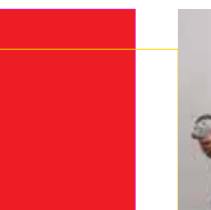
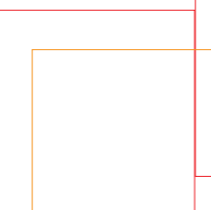
THE DUKE OF EDINBURGH'S AWARD

DofE is a life-changing experience. It is a tool to develop essential skills for life and work and a recognised mark of achievement, respected by employers.



SOCIETIES

We have a range of drop-in clubs available including our student newsletter, debating society and Rainbow Alliance, to name just a few! We have activities that focus on your wellbeing such as calisthenics, yoga, self-defence and craft and hobby clubs. Many of these groups are set up and led by students, so if you have a hobby that you would like to share, it is easy to set up an activity of your own; in 2023/24 these included a Christian Union and film, chess and boardgames clubs.

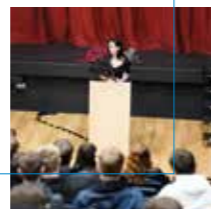


ACADEMIC EnRICH

Our Academic EnRICH programme provides super-curricular opportunities to enhance your knowledge, understanding and skills beyond the formal curriculum. It provides particularly strong support for those making applications to competitive courses and universities, for example, Oxbridge Universities and the Russell Group, or Medicine, Dentistry or Veterinary Science courses.

You can benefit from:

- Trips to universities (including Oxbridge)
- Talks from leading university representatives
- Subject-specific super-curricular activities
- The Extended Project Qualification (EPQ)
- Timetabled sessions about choosing a degree, making a competitive application and writing personal statements
- UCAS Early Deadline application support
- Our Medical Careers Academy – for students making applications for Medicine, Dentistry and Veterinary Science.
- Access to the 'Teams' group where you will hear about opportunities including summer schools, taster sessions, workshops and super-curricular activities



CAREERS AND PROGRESSION



Our Careers and Progression Team will provide you with impartial careers information, advice, and guidance. The team includes a full-time qualified Level 7 Careers Advisor, Student Liaison Officer and Progression Advisers. If you require advice before choosing your Study Programme then contact us – careers@richu.ac.uk.

Through careers-themed tutorials and presentations, you'll be encouraged to explore the range of options open to you. You will have access to online resources such as Unifrog and a designated online Careers & Progression padlet where opportunities are promoted.

These resources are designed to ease the research process and provide clear, up-to-date information. Your Progress Tutor will be the initial point of contact for advice with careers embedded into the curriculum and tutorial sessions. You can also book one-to-one meetings with our team who provide guidance relating to the following areas:

- Apprenticeships – Degree, Higher, Intermediate
- University and degree subject choices
- Overseas universities
- Higher education finance advice
- UCAS support – including early deadline
- Gap years
- Career choices
- CVs, covering letters and application forms
- Employment locally and nationally
- Job interview practice
- Work placements and work experience
- Changes to your Study Programme.

A variety of careers events are arranged including trips to the UCAS Exhibition and the National Apprenticeship Show. In addition, each curriculum area has a priority to provide work readiness activities relating to each subject. This includes talks from professionals, industry visits, subject conferences, work experience, university visits and workplace projects.

At the end of our first year, you will participate in 'CareerFest'. CareerFest features inspirational speakers, a careers fair with over 70 exhibitors, university talks, local employer forums and a variety of fun festival themed activities including a photobooth, DJ, refreshments and more.

RICHARD HUISH STUDENTS ACHIEVE EXCEPTIONAL OUTCOMES AT UNIVERSITY

Many Huish students progress to university. Studying A Levels and Vocational qualifications at Huish allows access to the world's leading universities and gives you excellent preparation for success when you are there. Huish students go on to perform exceptionally well at university, outperforming the majority of other providers.

| | Provider | Cohort size | First | Upper Second | First class and upper second class honours | Lower Second | Third | Unclassified |
|-------------|---------------------------|-------------|-------|--------------|--|--------------|-------|--------------|
| ALL UK HEIs | RICHARD HUISH COLLEGE | 340 | 34.2% | 52.0% | 86.2% | 10.4% | 1.6% | 1.8% |
| | Sixth Form College sector | 29275 | 32.3% | 48.2% | 80.5% | 15.4% | 3.0% | 1.0% |
| | State sector | 192130 | 31.6% | 48.4% | 79.9% | 15.3% | 2.8% | 1.9% |
| | Independent sector | 24655 | 36.9% | 51.7% | 88.6% | 8.3% | 1.2% | 1.9% |

Source: Higher Education Statistics Agency Limited. 2021/22 academic year data.

LEARNING SUPPORT AND MENTAL HEALTH & WELLBEING

LEARNING SUPPORT

All have access to Learning Support through short-term, targeted study skills interventions delivered on a 1:1 basis or as a small group. We will support you to achieve your potential and offer individualised support for students with a learning difficulty, medical condition, special educational need or disability (plus those with an Education Health Care Plan).

- Use of assistive technology
- Revision techniques to prepare for assessments and exams
- Organisation to help you keep track of your classroom and independent learning
- Time management skills and study timetables to support you in balancing your workload and deadlines
- Exam access arrangements
- Classroom support strategies in line with your need/s

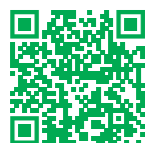
learningsupport@richuish.ac.uk

MENTAL HEALTH AND WELLBEING

We offer support for your mental health and wellbeing to help you be successful in your academic studies. We connect with a variety of external agencies in addition to the following services within Huish:

- Mental health and wellbeing advice and support
- Wellbeing enrichment opportunities
- Lesbian, Gay, Bisexual, Transgender, Questioning and Friends support group (LGBTQ+)
- Sexual health advice through Somerset Wide Integrated Sexual Health service (SWISH) and the C-Card service.

wellbeing@richuish.ac.uk

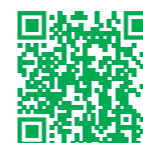


TRAVEL AND BURSARY

FINANCIAL SUPPORT

We have a range of bursaries and grant schemes available including our Travel Contribution, Discretionary Bursary, Vulnerable Bursary and Free College Meals.

Full details are available on our website or contact bursary@richuish.ac.uk.



TRAVELLING TO COLLEGE

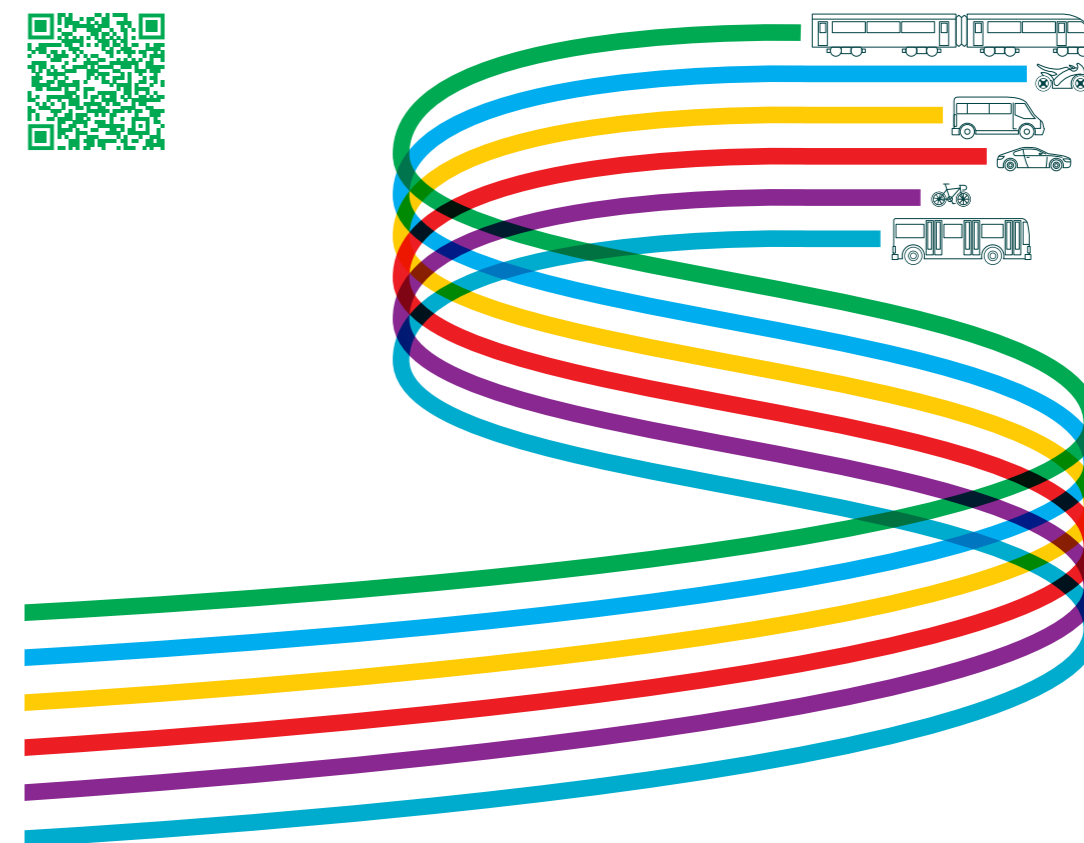
We encourage you to walk, cycle and lift share where possible. The campus has cycle racks and connecting paths that make riding or walking to campus easy for local students and there are a small number of dryers available for drying wet weather gear.

There is an extensive network of public buses which serve Huish, and a permit car park. We also operate a free minibus shuttle service between Taunton train station and the campus.

Financial support is available for ALL students travelling by public transport. The Travel Contribution is a non-means tested bursary available to any student purchasing a bus or train ticket provided you are not in receipt of a travel award. The amount you will receive is dependent on the ticket purchased.

We recommend using www.travelinesw.com to plan your journey.

Discover more about cycle schemes, parking and transport options on our website.



BOARDING

EXPAND YOUR HUISH EXPERIENCE

As members of the Boarding Schools Association (BSA) State Boarding Forum, we are proud to offer a unique boarding experience. We are one of only two State Sixth Form Colleges in England to offer an accommodation option and Oak House is rated outstanding by Ofsted.

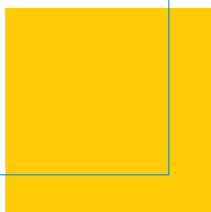
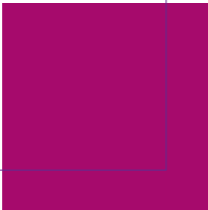
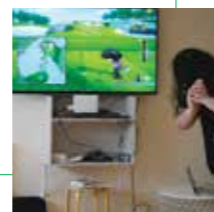
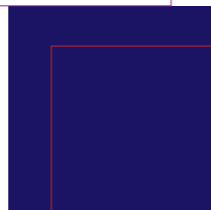
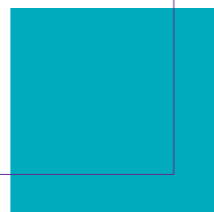
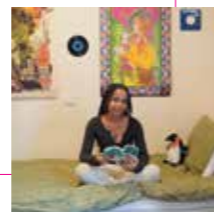
Our reputation for academic excellence and strong pastoral care attracts students from across the UK and internationally. This diverse group of young people enriches our Huish community.

Oak House offers you a taste of independent living in preparation for university life and beyond. The house is very close to our campus, allowing easy access to college life, both academically and socially.

You can board full-time or on a flexi-board basis. If your journey to Huish is long or you simply enjoy boarding, Oak House could be just what you need.

Boarding places are allocated on a first-come, first-served basis, so we recommend applying early to avoid disappointment. Your room will be secured once you have paid your deposit.

For more information email boarding@richuish.ac.uk.



FACILITIES

We regularly invest in our equipment and facilities to ensure you can learn within bright, modern environments equipped with the industry-standard technology you'll be using in the future.

SPORT

A brand new 3G pitch became the latest addition to our Sports provision in 2023, following the past development of Ash Meadows Rugby Pitch, a cross-country circuit and Sycamore Sports Hall & Gym.

ASPEN MUSIC CENTRE

This centre includes 2 recording studios with RedNet Technology, 2 soundproof live rooms, practice rooms, a secure instrument store, our music classrooms and a Mac suite. A perfect home for aspiring artists and always a lively hub of activity.

MAPLE VISUAL ARTS AND COMPUTING BUILDING

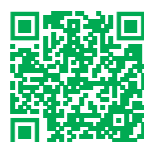
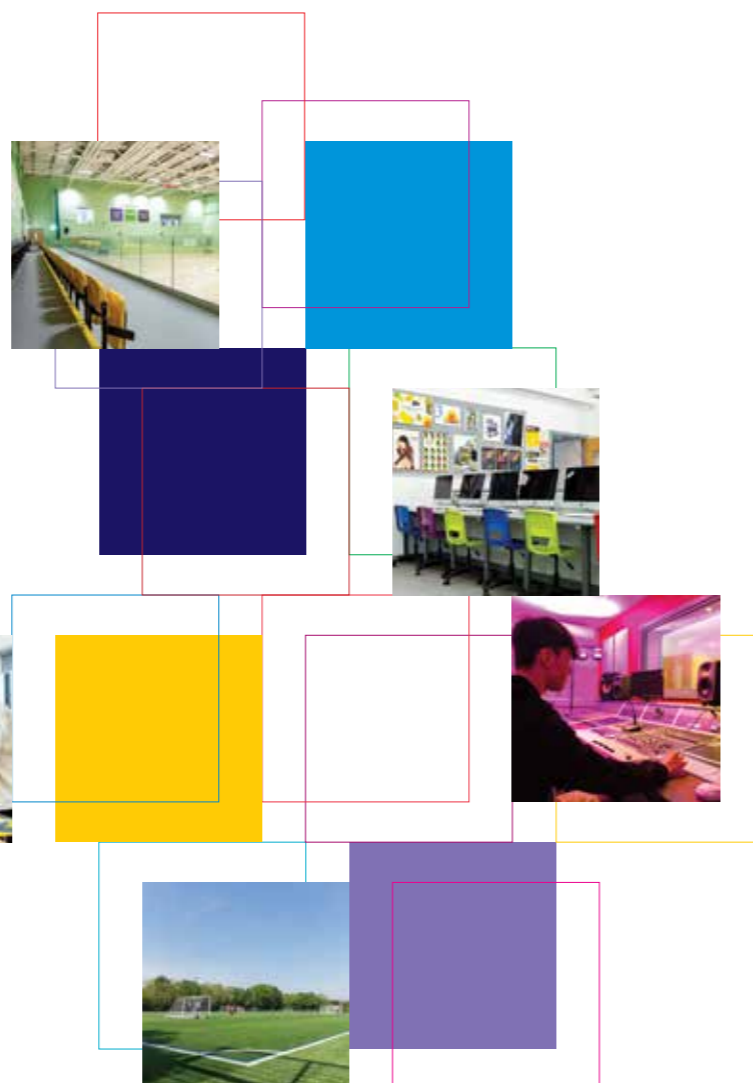
This £3 million building includes computer suites with state-of-the-art software for those pursuing ICT careers and an art studio and graphics suite where your creativity can thrive.

HUISH THEATRE AND PINE STUDIOS

We have large rehearsal spaces and a 234-seat theatre equipped with professional lighting and sound desks providing a grand performance venue for our musicals, concerts and other events.

CAFÉS AND STUDY SPACES

There are multiple food outlets where you can relax with your friends and a variety of study spaces so you can find your preferred study environment.



COURSES

LEVEL 2



Visit our website to see the Level 2 Pathway Study Programmes

A LEVEL



Art
Biology
Business
Chemistry
Classical Civilisation
Computer Science
Economics
English Language & Linguistics
English Literature
Environmental Science
French
Film Studies
Geography
Geology
German
Graphic Design
History (Early Modern)
History (Late Modern)
Law
Mathematics
Mathematics (Further)
Music
Philosophy, Religion & Ethics
Photography
Physical Education
Physics
Politics
Psychology
Sociology
Spanish

VOCATIONAL QUALIFICATIONS



Applied Science
Business, Marketing & Management
Criminology
Digital IT & Computing
Drama
Education & Early Years
Health & Social Care (Health Studies)
Media, Film & Advertising
Media Production
Music Performance
Music Production
Music Performance & Production
Sport, Exercise & Coaching
Uniformed Protective Services

ADDITIONS TO STUDY PROGRAMME



Extended Project Qualification
French (AS Level)
German (AS Level)
Mathematics (Core)
Music (AS Level)
Spanish (AS Level)

APPRENTICESHIPS



ACCOUNTANCY (AAT)
L2 Accounts/Finance Assistant
L3 Assistant Accountant
L4 Professional Accounting Technician

EDUCATION
L2 Early Years Practitioner
L3 Early Years Educator
L3 Teaching Assistant

APPLIED SCIENCE

BTEC EXTENDED CERTIFICATE OR EXTENDED DIPLOMA

This exciting, practical, industry-focused course has an emphasis on technical laboratory skills. It is ideal for students seeking grounding in all three of the major science disciplines: Biology, Chemistry and Physics. You'll study a wide range of topics that are relevant to a variety of career paths and the course is structured to allow you to focus on specific areas, completing them a module at a time. Options past students have gone on to study include Paramedic Science, Marine Biology and Physiotherapy.



BUSINESS

A LEVEL

In Business you will learn everything there is to know about the business world in a high work ethic environment, where you get the chance to work both independently and as a team. There is a strong focus on contemporary business examples in lessons, such as Starbucks, Uber and Amazon and you will analyse a range of topics from localisation to innovation. Studying Business will give you key skills and knowledge that are extremely sought after by employers, universities, apprenticeships, or even when starting your own business. It is highly recommended!



ART

A LEVEL

You will explore a variety of practical techniques across a range of 2D, 3D and digital media, while developing the skills to produce bold and expressive responses to a range of contemporary and personal themes. Learning to research, explore and respond to the work of artists from historical examples, to the most contemporary approaches, is a key part of the course. The combination of coursework and exams is perfectly suited to those who enjoy assignment-based assessment.

You can progress onto a Foundation Diploma, Art & Design Degree or anything where an understanding of visual language is required.



BUSINESS, MARKETING & MANAGEMENT

BTEC EXTENDED CERTIFICATE OR EXTENDED DIPLOMA

This course provides an insight into many different sectors in business including Marketing, Financing & Accounting, Human Resources, Recruitment, Event Management, Retail, International Business and Economics. Many units are assessed through written assignments, roleplays, presentations and involvement with local employers, which enable you to develop a range of skills, whilst other units are assessed via external examinations. You will be provided with applied information and knowledge about the world of business to help you understand how businesses operate on a local, national and global basis.



BIOLOGY

A LEVEL

Biology will give you a fascinating insight into a diverse range of topics. You start by looking at molecules and cells and build up to tissues, organs and organ systems in both plants and animals and then to full ecosystems. Carrying out lots of practical work makes learning enjoyable and really helps your understanding, for example, dissections allow you to see the theory you have been learning in real life. Biology opens up a wide range of career options such as Medicine, Marine Biology and Conservation.



CHEMISTRY

A LEVEL

Chemistry will develop your problem-solving skills and help you explain complex phenomena. You will delve into the periodic table, use maths to understand energetics and explore organic chemistry in depth. You'll get an insight into the importance of chemistry from environmental chemistry through to the development of pharmaceuticals. You'll use analytical techniques that could be used in forensic and materials science. Chemistry opens pathways into medicine, engineering and a wide range of scientific pathways and is also highly regarded by other fields such as law and finance.



CLASSICAL CIVILISATION

A LEVEL

Classical Civilisation is the study of Ancient Greeks and Romans, through their literature, art and history. The focus is mostly on the Ancient Greeks, although does include a brief look at the Roman Emperor Augustus. We will look at Greek art, read the Iliad by Homer and look in-depth at the beginnings of democracy in Athens. We also read Virgil's Aeneid and the mythological foundations of Roma. This is an exam-based subject with no coursework and lots of reading. We also go on amazing trips to the British Museum and a residential to Greece.



DIGITAL IT & COMPUTING

BTEC EXTENDED CERTIFICATE OR EXTENDED DIPLOMA

Digital IT and Computing is an exciting and in-depth course taking you onto careers that are in high demand. Cyber Security, Software Development and Creative Industries are just some of the areas past students have successfully gone onto via university, sponsored degrees and employment. If you have an interest in a dynamic subject area then this is the course for you. You will have the opportunity for enrichment in areas such as building a PC, furthering your skills in games and animation and networking.



COMPUTER SCIENCE

A LEVEL

Computer Science provides you with an understanding of the mathematical, scientific and engineering principles that underpin the computer systems that we use today. From the very first lesson students become programmers and problem solvers, and we introduce programming concepts through a variety of paradigms including procedural, object-oriented and functional. You will study algorithms, binary representation of data, networks and Boolean logic, among many other topics. Computer Science is a wide-ranging discipline, and you will develop skills that support access to a range of computing related degrees or apprenticeships, and that support other subjects.



DRAMA

CAMBRIDGE TECHNICAL

This vocational course embeds practical work which is fun, engaging and industry relevant. It allows you to grow as an actor and theatre maker. You will practically study a range of practitioners and set works which will in turn inspire you to create your own theatre. The course includes an element of coursework based on industry briefs and you will learn skills that you will use again and again in the world of Performing Arts. Assessment is based on practical work and coursework - there are no unseen exams.



CRIMINOLOGY

APPLIED DIPLOMA

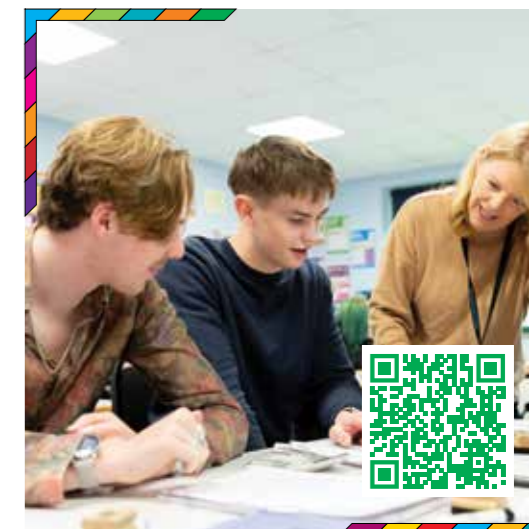
Like it or not, crime is all around us. During this course, you will study types of crime, theories of criminal behaviour and the process from crime scene to courtroom and punishment. You'll engage in thorough examinations of a range of real-life criminal cases and apply various criminological theories to them to advance your understanding of how crime operates in society and the impact that it has. This course is assessed through a mixture of examinations (50%) and controlled assessment (50%). You will gain a variety of transferrable skills required for your next steps.



ECONOMICS

A LEVEL

It is an exciting time to study Economics. Whether you are concerned about the cost of living or global warming, the study of Economics is becoming increasingly important as we consider the impact of our choices on each other and the environment. This course is developed with up-to-date content so you can relate what you are learning to the world around you locally, nationally and globally. Through studying Economics you will develop a wide range of skills including the ability to analyse data, think critically and make informed decisions.



EDUCATION & EARLY YEARS

T LEVEL

This T Level ensures you have the knowledge and skills to progress into employment or higher education focusing on the education of children and young people aged 0 -19 years. The first year focuses on child development, attachment, behaviour and reflective practice across educational settings. In the second year, you start to develop an occupational specialism as an Early Years Educator, developing professional competence in an industry placement. You will complete a minimum of 750 hours work placement which will provide you with invaluable experience and a licence to practice as an Early Years Educator.



ENVIRONMENTAL SCIENCE

A LEVEL

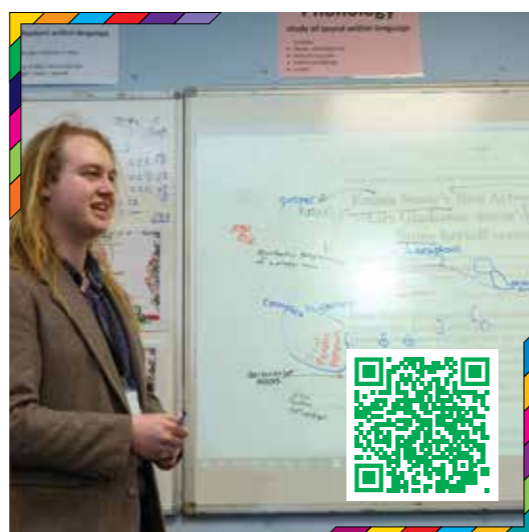
Environmental Science is a fascinating subject that explores all aspects of the natural world, providing explanations to many of the world's pressing environmental problems. The course is varied with a wide range of teaching approaches used including classroom-based learning, lab experiments, practical investigations and interesting field trips. This subject can really change your perspective on the world and provides a great base of knowledge and skills for a huge range of career paths. This versatile course combines particularly well with other Science and Earth Science subjects.



ENGLISH LANGUAGE & LINGUISTICS

A LEVEL

If you love English and are intrigued by it, you will enjoy this course. It's very different from GCSE, incorporating child language, tech language and journalistic writing, it will constantly challenge you to think. This course is about discovering the magic of the English language, its diversity and variety. You will learn about the cultural complexities of language (stereotypes, bias, prestige etc) and it will make you consider how language has developed and continues to do so. You will look at language in ways you never imagined!



EXTENDED PROJECT QUALIFICATION

CERTIFICATE

Studying the EPQ supports your personal aspirations for higher education and career development and gives you the opportunity to study an in-depth topic of your own choice. It will be available to you in your second year and you can choose to complete either a 5,000 word written report or create an artefact or production demonstrating the learning and evaluation of new skills. You will improve yourself as a critical, reflective and independent learner, developing skills creatively and demonstrating initiative, decision making and enterprise.



ENGLISH LITERATURE

A LEVEL

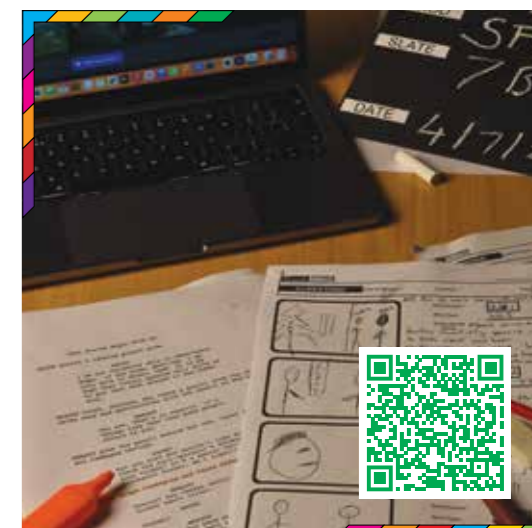
This course is for those who enjoy a variety of literature and literary discussion. You'll develop your appreciation of modern and older texts and skills in reading and detailed written analysis. We study single and comparative texts supported by contextual information, leaving room for your ideas and interpretations. Textual debates help you gain confidence with your written analyses. Using varied critical perspectives is important and you will be encouraged to widen your interpretation of poetry, prose and drama (including Shakespeare) from different literary periods. A non-exam unit involves independent prose reading and comparison where you can develop personal literary interests.



FILM STUDIES

A LEVEL

This course allows you to understand important developments in history, society and culture through the medium of cinema. From Silent Cinema to Contemporary Hollywood, the films we study offer rich and interesting analysis. They represent different periods and alternative representations of society. The course incorporates creative production, turning theory into practice by making a short film or writing a screenplay. You will develop a range of transferable skills including creative and critical thinking, textual analysis, communication, research skills and technical competencies.



FRENCH

A LEVEL OR AS LEVEL

These courses will develop your understanding and fluency of French alongside your knowledge of the cultures, societies and history of French-speaking countries. A wide range of resources are available such as Kerboodle, TV5 du monde and an opportunity to speak one on one with a native speaker each week. The AS Level option is a one-year course and is only available as an additional subject to your Study Programme. Nous avons hâte de vous voir à Richard Huish bientôt!



GERMAN

A LEVEL OR AS LEVEL

Choosing German will expand your communication skills and allow you to explore aspects of German culture, history and society, with insights into youth culture, the digital world, art, architecture, festivals and traditions. A wide range of resources are available such as Kerboodle and Deutsche Welle. You will speak one on one with a native speaker each week which will be beneficial to your fluency. The AS Level option is a one-year course and is only available as an additional subject to your Study Programme. Wir hoffen, Euch dort zu sehen!



GEOGRAPHY

A LEVEL

Geography is a unique blend of human and physical modules that help you understand the world you live in. It uses past and current world events and fascinating topical case studies to enrich your learning. The course includes field trip opportunities and is assessed using both coursework and exams. The coursework allows you to research a geographical topic that you are interested in. Geography will provide you with an all-round knowledge of the world and provides a range of future opportunities.



GRAPHIC DESIGN

A LEVEL

A Level Graphic Design will provide you with a broad introduction to traditional art-based and digital design processes. You will learn about the historical and contemporary influences within the design industry. Over the course, you will be set themed assignments and live briefs to help you build a creative and professional portfolio of illustration and graphic design. You will be offered the opportunity to visit national and international places of interest for research purposes.



GEOLOGY

A LEVEL

We learn how to read the ancient history of the planet. You'll learn all the theory, techniques and skills you need to turn a lump of rock into a story of ancient continents, long extinct life, volcanic eruptions and eons of slow and infinitely patient time. The syllabus is varied and includes five field trips. If you prefer to learn through drawing, experimenting, interpreting maps and being out in the field then this subject is for you! The best bits of Geography without the essays, coursework or human element!



HEALTH & SOCIAL CARE (HEALTH STUDIES)

BTEC EXTENDED CERTIFICATE OR EXTENDED DIPLOMA

Studying Health and Social Care is a good start for anyone who would like a career in which they support and care for others. A range of topics are covered in this subject which will enable you to understand the needs of individuals who use services and the roles and responsibilities of Health and Social Care professionals who support them. On the Extended Diploma programme, classroom-based learning is supported by work placements where you will have the opportunity to apply your knowledge and understanding in environments such as care homes, day services, hospitals and nurseries.

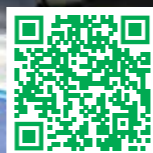


HISTORY

EARLY MODERN

A LEVEL

Early Modern History really captures how the world works. You will look at Tudor England and the French Revolution. The skills you develop in History are highly valued by universities and employers making it a great choice for students thinking about a wide range of careers. The world looks different after studying History!



MATHEMATICS

A LEVEL

If you like puzzling things out and solving problems where solutions are not immediately obvious, you could enjoy doing Mathematics. It is a subject that really “exercises the brain,” and Maths students learn to see through things in a logical, powerful way. The course covers a variety of mathematical topics, some of which will be familiar like algebra and algebraic graphs, whilst others are likely to be new, like calculus and logarithms. You will study ‘pure’ mathematics much of the time but will also learn to apply abstract mathematical methods to mechanical and statistical problems.



HISTORY

LATE MODERN

A LEVEL

Late Modern History really captures how the modern world was made. It's a fascinating and vibrant subject looking at the British Empire from 1857 to 1967 and the Cold War. History develops key skills such as attention to detail, researching, time management and organisation. These abilities are highly valued by universities and employers, therefore this subject is an ideal choice for multiple different career routes such as the Civil Service, Journalism and Banking.



MATHEMATICS

CORE

CERTIFICATE IN QUANTITATIVE REASONING

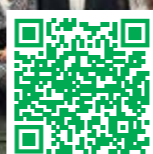
Core Maths will develop and enhance your real-life mathematical skills. The emphasis is on how and when to apply new and existing techniques to problems that arise in the workplace, in education, in personal finances and in everyday life. You will build on GCSE skills and learn new topics, such as mathematical modelling, spreadsheets, normal distribution, log scales, medical screening, scams and much more. Core Maths complements the Sciences, Earth Sciences, Business, Psychology and Economics. This one-year course can be added to any Study Programme. You will gain UCAS points equivalent to an AS Level.



LAW

A LEVEL

Law impacts every part of life and studying Law introduces you to both Criminal and Civil Law and the skills needed to answer legal problems. You will cover Criminal, Tort and Contract Law, Law Making and the English Legal System. We study theory and concepts of law which include philosophical ideas that underpin our legal system, and we explore the relationship between law and justice and morality. Many of our students go on to higher-level legal apprenticeships or study Law at degree level including at universities like Oxford, Cambridge, Durham, Manchester and Bristol.



MATHEMATICS

FURTHER

A LEVEL

A challenging but fascinating course for committed and very able mathematicians with a deep interest in the subject. You must study A Level Mathematics and two other subjects alongside this course. Studying this qualification can give you a “head start” on degrees with high mathematical content. Further Mathematics both builds on and broadens the range of ideas met on the Maths A Level, for example, topics like differential equations and functions are extended, whilst completely new branches, such as complex numbers and matrices, widen your knowledge of this vast subject.



MEDIA, FILM & ADVERTISING

CAMBRIDGE TECHNICAL

This vocational course gives you the chance to learn a range of skills in media production. In preparing for the Media Products and Audiences exam, you will learn about all stages of film production and apply what you've learnt practically—planning, scripting, shooting and editing a sequence of your own feature film. Work for the Pre-Production and Planning exam will give you skills across all media sectors. You will put these into practice by planning, pitching, creating and editing an advertising campaign.



MEDIA PRODUCTION

BTEC EXTENDED DIPLOMA

Do you love films, TV, social media, advertising, special effects, animation, music videos, radio and being creative? This course will prepare you for a career in the media, building practical skills and knowledge that can be used in whatever area interests you most. The course is 100% coursework assessed and you learn through research and individual and group practical work about a wide range of media products. You could go on to university, a job, or an apprenticeship to become an Editor, Camera Operator, Director, Sound Recordist, Radio Presenter, Graphic Designer and more.



MUSIC

A LEVEL OR AS LEVEL

If you already read music, play an instrument or sing, a Music AS or A Level will help you increase your practical skills and academic knowledge of music. You will work towards a solo recital, submit a composition portfolio and undertake a written exam on Classical, Pop and Modern areas of study. Your creative and listening skills will be expanded, allowing progression to study Music in Higher Education or a career in performing, composing or education. The AS Level option is only available as an additional subject to your Study Programme.



MUSIC PERFORMANCE

BTEC FOUNDATION DIPLOMA

If you are after a really practical subject that gives you real-life experience in the music industry, this is the one! You will have opportunities to perform with different bands or as solo artists in venues around the area and enjoy lectures from people in the industry like Session Musicians, Band Managers, Agents and Studio Engineers. Most excitingly, you will learn to produce and market your own music and record it in our amazing studio facilities. You will learn new song writing techniques and hopefully everything you need to be successful in the industry.



MUSIC PRODUCTION

BTEC FOUNDATION DIPLOMA

This course is one of the most creative on offer. In Year 1, you'll get to grips with the basics of music technology and start producing your own music (or covers of your favourite songs!). You'll learn how to build beats, use samples, program your own synths and create projects from the ground up. In Year 2, you will produce a portfolio of work including remixes, film compositions, original pieces, and recordings. You will also learn how to engineer at our gigs.



MUSIC PERFORMANCE & PRODUCTION

BTEC EXTENDED DIPLOMA

Music Performance and Production is an innovative, creative and practical course which helps you achieve your best and develop your creative practice, in an assisted and well-equipped environment. You will cover a wide variety of modules concerning everything from songwriting and music business to remixing and live sound, with lots of opportunities to showcase and receive feedback upon your original creative work. Overall, the course provides a well-structured, credible, and fun way to collaborate and realise creative ideas and projects.



PHILOSOPHY, RELIGION & ETHICS

A LEVEL

In this subject, there is so much to get your teeth into. In 'Philosophy of Religion' we think about the relationship between thinking and believing. 'Religion and Ethics' on the other hand, involves considering how we make moral decisions in light of what we see in the world. In 'Developments in the Buddhist Thought' we learn about how Buddhism approaches the question of how we can learn to heal ourselves from the suffering that life inevitably involves. We use a range of learning opportunities – reading, talking, writing, guest speakers and taking local and metropolitan trips.



PHYSICS

A LEVEL

A highly valued qualification in A Level Physics will give you a deeper understanding of the world, from the super small to the incomprehensibly large. There will be something in the course that interests you. You will work with classmates in modern labs and learn to use new equipment. The syllabus helps develop skills in experimental work, research and data analysis, and is broad enough to enable you to keep your options open for specialisation at university. Physics will allow you to apply your mathematical skills to solve a range of real-world problems.



PHOTOGRAPHY

A LEVEL

A Level Photography explores a variety of practical techniques across both digital and traditional processes. You will develop the skills to produce bold and expressive responses to a range of contemporary and personal themes. Learning to research, explore and respond to the work of photographers from historical examples to the most contemporary approaches is a key part of the course. The combination of coursework and exams is perfectly suited to those who enjoy more assignment-based assessment. Every organisation now pays great attention to their visual output, so Photographers have never been in greater demand!



POLITICS

A LEVEL

Politics is for anyone who has, or is prepared to develop, a keen interest in current affairs. The course focuses on the contemporary politics of both the UK and the USA, as well as the structures of government and the ideas which form the basis of political decision making. You may have the opportunity to visit Parliament and the UK Supreme Court. With the political landscape constantly changing, it is a fast-moving subject where new developments are discussed on a regular basis, keeping it relevant and stimulating.



PHYSICAL EDUCATION

A LEVEL

This course combines both physical and academic challenges to give you a fantastic insight into the world of sports performance. You will learn about human anatomy and physiology, how to train smarter, the importance of psychology in sport and the influence that modern technology is having on sports performance. You will also investigate topics such as the political exploitation of the Olympic games and the evolution of sport from pre-1850 to now with sociocultural themes. There are also plenty of Sport EnRICH opportunities available alongside the course.



PSYCHOLOGY

A LEVEL

You will explore the fascinating world of human behaviour and the scientific study of the mind. This course covers a range of topics from the structure and function of our brains to understanding complex conditions such as schizophrenia. It has the perfect combination of scientific content and essay-based exams. You will get to plan your own research, preparing you for further opportunities beyond college such as studying Psychology or going down the many other career pathways that this course prepares you for.



SOCIOLOGY

A LEVEL

The biggest strength of Sociology is its unwavering relevance to contemporary society. From theory to issues like media and crime, Sociology is constantly evolving. You'll take part in evidence-based discussions about everyday topics which provide a new way of thinking about the world around you. Last year, we discussed BLM, the #MeToo movement, types of social media and their impact on society. What you learn in the classroom will stay with you for the rest of your life and you will view the world differently. Sociology also provides highly transferrable skills for progression.



SPANISH

A LEVEL OR AS LEVEL

By choosing Spanish, you will be enriched with not only the language, but the culture too. You will have the opportunity to immerse yourself further with a trip to Salamanca where you will stay with a Spanish family. To develop your skills, we offer one-to-one sessions with a native speaker. The course is assessed through a mixture of speaking, reading, writing and listening, which you will practice frequently. Spanish combines well with all subjects and broadens your prospective employment and travel endeavours. The AS Level option is a one-year course and is only available as an additional subject to your Study Programme.



SPORT, EXERCISE & COACHING

BTEC EXTENDED DIPLOMA

This course is about gaining hands-on transferrable skills in leadership, coaching and officiating. It will equip you with the essential knowledge required for future study or a career in sport. It offers you the chance to study on a more practical level whilst learning about exercise and the physiological effects on our anatomy. You will explore how nutrition affects our health and performance and how to test for fitness. It will give you an excellent insight into the different career paths sport has to offer.



UNIFORMED PROTECTIVE SERVICES

BTEC EXTENDED DIPLOMA

This course gives you a chance to develop the skills and essential knowledge required for a successful career in the Military, Police, Fire Service or other fields of uniformed services. This vocational course consists of 13 core units which are assessed through a mixture of external examinations and internally assessed coursework. You will have the opportunity to take part in a range of teamwork and leadership activities on-site and on residential trips led by representatives of the Uniformed Protective Services.



APPRENTICESHIPS

If you are ready to start employment you can choose an apprenticeship as your training option.

You learn skills on the job to earn accredited qualifications and can build on your qualifications throughout your career.

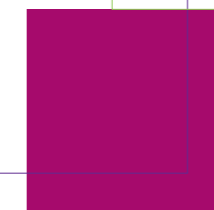
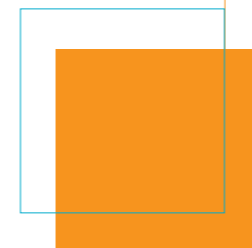
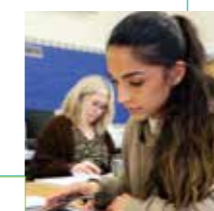
Apprenticeships include taught sessions on campus where our Tutors support you to develop knowledge of your employment sector.

EDUCATION APPRENTICESHIPS

If you are looking to inspire and nurture others in a role within a nursery or school setting, contact our team to find out about our apprenticeships within teaching and early years environments.

ACCOUNTANCY APPRENTICESHIPS

Our AAT apprenticeships provide you with internationally recognised qualifications ready for a career in accountancy or finance.



INDEX

A

AAT 37
Academic Enrichment 14
Accountancy 37
Applied Science 22
Applying 39
Apprenticeships 37
Art 22

B

Biology 22
Boarding 18
Bursary 17
Business 23
Business, Marketing & Management 23

C

Careers & Progression 15
Chemistry 23
Course Options 8 & 9, 21
Classical Civilisation 24
Computer Science 24
Criminology 24

D

Digital IT & Computing 15
Drama 25
Duke of Edinburgh's Award 13

E

EARTH SCIENCE COURSES:
/ Environmental Science 27
/ Geography 28
/ Geology 28
Economics 25
Education & Early Years 26
Education Apprenticeships 37
English Language & Linguistics 26
English Literature 26
EnRICH 12 & 13
Entry Requirements 39
Environmental Science 27
Extended Project Qualification (EPQ) 27

F

Facilities 2 & 20
Film Studies 27

Financial Support 17
French 28
Further Mathematics 31

G

Geography 28
Geology 28
German 29
Graphic Design 29

H

Health & Social Care (Health Studies) 29
History Early Modern 30
History Late Modern 30
Huish30 11

L

Law 30
Learning Support 16
Level 2 Pathway 9 & 21

M

MATHEMATICS:
/ Core Mathematics 31
/ Further Mathematics 31
/ Mathematics 31

Media Film & Advertising 32
Media Production 32
Medical Careers Academy 14
Mental Health & Wellbeing 16

MODERN FOREIGN LANGUAGES:

/ French 28
/ German 29
/ Spanish 36

MUSIC COURSES:

/ Music 32
/ Music Enrichment 13
/ Music Performance 33
/ Music Performance & Production 33
/ Music Production 33

P

Performing Arts Enrichment 13
Philosophy, Religion & Ethics 34
Photography 34
Physical Education 34
Physics 35

Politics 35
Psychology 35

R

Religious Studies 34

S

SCIENCE COURSES:
/ Applied Science 22
/ Biology 22
/ Chemistry 23
/ Physics 35
Sociology 36
Spanish 36
Sport, Exercise & Coaching 36
Sport Enrichment 12
Student Voice 5
Study Programmes 8 & 9
Support 16

T

Timetable 10
Travel 17
Tutorials 10

U

Uniformed Protective Services 37

V

VISUAL ARTS COURSES:
/ Art 22
/ Graphic Design 29
/ Photography 34

W

What Makes Huish Special 6 & 7

APPLYING

7 STEPS TO HUISH

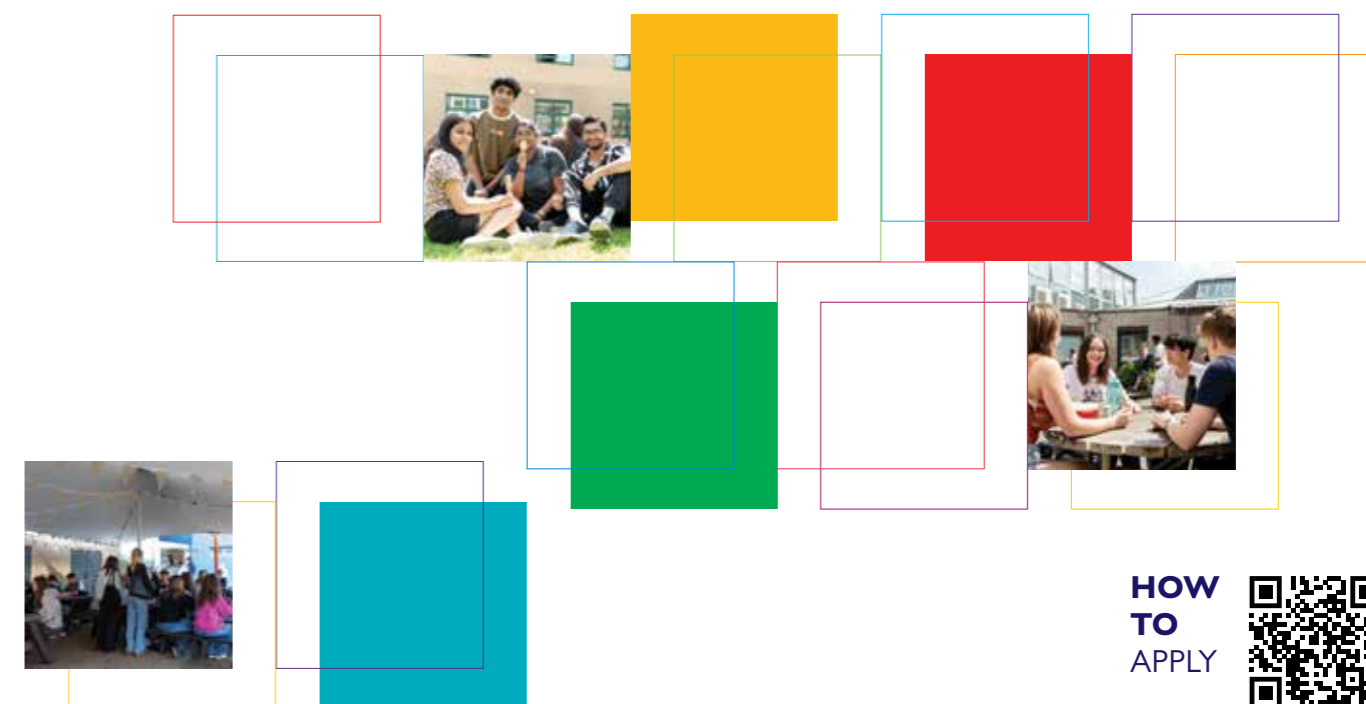
- 1 OPEN EVENTS – Join us on Saturday 12th October, Monday 14th October and Wednesday 30th April to explore the campus and meet our staff and students.
- 2 APPLY – Choose your Study Programme and complete an online application.
- 3 ADVICE AND GUIDANCE MEETING – You will be invited to an Advice and Guidance meeting where we will answer your questions and give you advice on your Study Programme.
- 4 OFFER – At your Advice and Guidance meeting you will receive an offer of a place.
- 5 WELCOME TO HUISH – In the summer we will invite you to our Welcome to Huish days where you can trial your lessons and experience what it's like to be a Huish student.
- 6 GCSE RESULTS DAY – If you have any questions following your results, our staff will be here to help.
- 7 ENROLMENT – At enrolment you can finalise your Study Programme, get your ID badge and become an official Huish student!

OUR STANDARD ENTRY REQUIREMENTS

We have a wide range of courses available, including A Levels, vocational courses, GCSE resits, apprenticeships and professional qualifications.

- The entry requirements for a Level 2 Pathway are a GCSE profile of mainly grade 3s including Mathematics and English Language.
- The entry requirements for a Level 3 programme are at least five GCSEs at grade 9 to 4, including Mathematics and English Language. For a T Level or BTEC Extended Diploma, a Vocational Level 2 qualification at grade merit or above can be accepted in place of one GCSE. Some courses have higher requirements; these will be discussed with you at your Advice and Guidance meeting and your enrolment appointment.

Call us on 01823 320800, email us using admissions@richuish.ac.uk, or visit our website for further clarification about qualifications.



HOW
TO
APPLY

