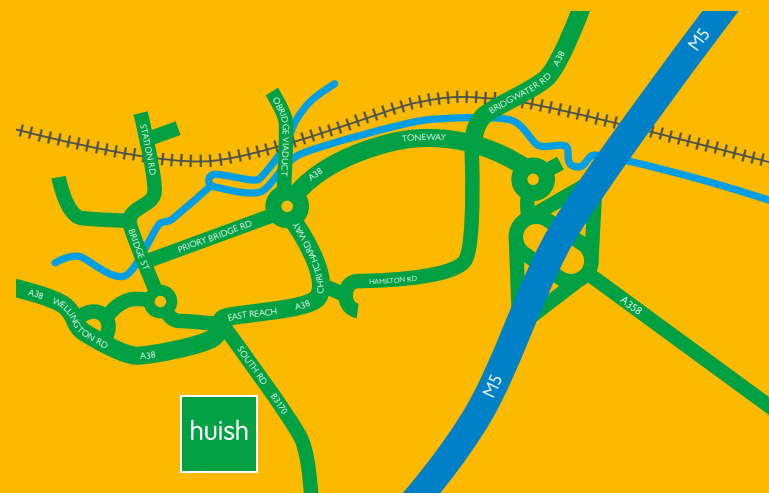


OPEN EVENTS

Saturday 11th October 2025

Monday 13th October 2025

Wednesday 29th April 2026



Richard Huish College, South Road, Taunton, Somerset, TA1 3DZ.

T 01823 320800 | hello@huish.ac.uk | www.huish.ac.uk

For information in other formats please call 01823 320800.

RICHARD HUISH COLLEGE PROSPECTUS 2026/27

PROSPECTUS 2026/27





WELCOME



Your time at Huish is something that we hope you will remember forever. With our wide range of course choices and enrichment programmes, you will be part of a vibrant, inclusive and successful learning community.

College is in many ways a bridge between school and your future. We pride ourselves on providing an exceptional, student-centred Sixth Form experience, whether you choose academic, vocational or apprenticeship qualifications.

Studying with us is a rewarding, enriching experience. Huish is one of the best Sixth Form Colleges in the country for outcomes and more importantly for the significant progress that students make whilst they are with us.

We have high expectations of each student, and our passionate staff will work closely with you to ensure you achieve the very best you can. We are enormously proud of what our students accomplish and are committed to challenging you to become lifelong learners and reflective, critical thinkers who are well-equipped to make a positive contribution to the world.

I hope that this prospectus gives you a flavour of what being a student at Huish is like and guidance about how to begin exploring your post-16 choices. You can follow the QR codes throughout the prospectus to access more details and the latest information. We would be delighted to welcome you into our community and look forward to meeting you soon.

A handwritten signature in black ink, which appears to read 'Emma Fielding'.

Emma Fielding
Principal



STUDENT VOICE

Student Associate Governors



Hello. We are Ella and May, your Student Associate Governors. Alongside the other members of the Student Executive Team, our role is to ensure your transition to college is as seamless as possible.

Ranked in the top 1.7% in England for student progress, Huish is an outstanding place to study; from the wide range of Study Programmes to an extensive list of EnRICH opportunities, our college fosters personal development for each individual.

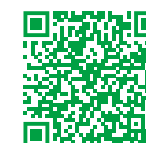
The teachers at Huish are passionate, always going above and beyond to help students with their studies, and our Tutors are supportive and accommodating.

At Huish, we are encouraged to take part in EnRICH programmes. These are a central part of our experience and can help you to meet people, develop new skills, and go beyond your comfort zone. There is something for everyone!

Huish goes further than supporting students with their learning; mental health, finance, and technological support are also available. Throughout your time at Huish, from your transition until the end of your chosen course, Huish will encourage you to do your best.

We are excited to welcome you to this community and look forward to meeting you.

Ella Culshaw and May Bloor-Gould
Student Associate Governors



Student Executives and Ambassadors

WHAT MAKES HUISH SPECIAL?

INSPIRATIONAL TEACHING

Our specialist teachers are passionate about your education and with their support you can achieve the best outcome. Our teachers engage in a vibrant professional learning community, using the best evidence-informed approaches to teaching, learning and assessment to keep them at the top of their professional game.

UNIQUE STUDY PROGRAMMES

With around 50 courses to choose from we can help you find the right options for you. Select A Levels, Vocational qualifications, or a mixture of both, to find a learning style that suits your strengths. See page 8.



FANTASTIC FACILITIES

We consistently develop our campus to provide state-of-the-art facilities. Discover more about our technical studios, computing suites, and sports additions on page 18. We also have plenty of study areas and social spaces to enjoy on campus.



DEDICATED TUTORING

Through our specialist Pastoral Tutoring system we will prepare you to navigate the new issues you'll face as you approach adulthood. Your Tutor will get to know you as an individual, offering support and guidance for your academic pursuits, as well as your general wellbeing. See page 10.

BOARDING ACCOMMODATION

Join the Oak House Family! Our Ofsted Outstanding accommodation is just a few minutes' walk from campus and can give you a taste of independent living. Full-time, weekly and flexi-boarding are available. See page 19.



EnRICH

You are sure to find something to tempt you in our EnRICH programme. Our extensive offer ranges from sport, music and the Duke of Edinburgh's Award, to debating, coding, and volunteering, to name just a few. We also have dedicated EnRICH days for everyone to get involved in. See page 12.

LIFE AFTER HUISH

We have a specialist team that collaborates with the Pastoral Tutoring team to ensure you are supported and prepared for Higher Education, Degree Apprenticeships, Apprenticeships, or the workplace. See page 15.



TOP RESULTS

We rank in the top 1.7% in England for student progress. Our consistently excellent results are because our students achieve beyond what they expect. Our A Level progress score ranks in the top 7% nationally and our vocational progress score in the top 15%. The SCFA HESA report found Huish students are more likely to achieve a first-class honours degree at university than those coming from across the Independent and State sectors. See page 15.

SPORTS ACADEMIES

We are passionate about sport and through our partnerships with Bristol Bears Rugby, Somerset Cricket Foundation and Huish Tigers Basketball, we can help you to develop your sporting career alongside top-quality academic study.



CHOOSING YOUR COURSES

Choosing the right combination of courses is important and can affect the options open to you in the future.

WE SUGGEST YOU CONSIDER THE FOLLOWING:

- Your aspirations
- Your interests and skills
- The subjects you enjoy
- The way you prefer to learn
- Any career plans
- Your expected achievements at GCSE
- The entry requirements of the course.

Take advice from people who know your capabilities, e.g. Teachers, your school's Careers Advisor and your family. Follow the QR codes within this prospectus to find more detailed information about our courses. Remember, whilst these decisions are critical to your future, we are here to help. You can talk to us at Parents' Evenings, Open Events and many other steps along the way.



TYPE OF LEVEL 3 STUDY PROGRAMME	SUBJECTS STUDIED	QUALIFICATION OPTIONS	Weekly Tutorial & EnRICH
A Levels	3	A Levels	
Mixed Programme	3	Select from A Level and Single Vocational qualifications	
Vocational	1 in-depth (equivalent to 3 A Levels)	Triple Vocational qualification	



HOW MANY COURSES CAN I CHOOSE?

Level 3 students can study three subjects or a full-time course equivalent to three A Levels.

- Level 3 Study Programmes are two years in duration
- A Single Vocational qualification is equivalent to one A Level
- A Triple Vocational qualification is equivalent to three A Levels in value and lesson time.

You can request to add an AS Level, EPQ, or Core Maths qualification to one year of your Study Programme.

LEVEL 2 PATHWAY

If you have been unable to complete your GCSEs due to personal circumstances, or may not have achieved the grades required to access a Level 3 Study Programme, we offer clear progression pathways.

Select a Science, Social Science or Creative pathway to create a Study Programme equivalent to four GCSEs.

Your programme will include specialist tutorial support, work experience, EnRICH opportunities, trips and team-building activities, to help develop your skills, confidence and qualifications for progression to Level 3 study.

- Level 2 Study Programmes are one year in duration.

CHOOSE A PATHWAY:

SCIENCE:
Combined Science (Trilogy)

SOCIAL SCIENCE:
Sociology
and a Higher Project Qualification

CREATIVE:
Media

PLUS TWO ADDITIONAL QUALIFICATIONS:

- Mathematics*
- English Language*
- Business & Enterprise
- Health and Social Care
- Sport
- Sociology

*GCSE Maths/English Language are mandatory if you have not achieved a grade 9-4.

A TYPICAL STUDENT WEEK

Huish is a vibrant place to study and probably very different from your school. It is an excellent step towards your future university or working life. You are encouraged to develop independent study skills and we are committed to supporting you to achieve your goals.

WHAT IS THE TIMETABLE LIKE?

The College opens at 8.00am when the Huish Kitchen is open for breakfast and lessons start at 9.00am. On Monday, Tuesday, and Thursday the final lesson finishes at 4.40pm. Lessons finish at 3.30pm on Wednesday and 3.05pm on Friday. Your timetable can be designed to incorporate Sport EnRICH. Buses leave at 4.45pm.

For each of your subjects (single units) you will have a 1-hour 55-minute lesson and two 1-hour 30-minute lessons each week. In addition, you will attend a weekly 1-hour 30-minute tutorial session.

SAMPLE TIMETABLE

TIME	MONDAY	TUESDAY	WEDNESDAY	THURSDAY	FRIDAY
09.00 – 10.55		APPLIED SCIENCE	GEOLOGY		PHYSICAL EDUCATION
10.55 – 11.10			BREAK TIME		
11.10 – 12.40		PHYSICAL EDUCATION		TUTORIAL	
12.40 – 13.35		CHOIR	LUNCH		
13.35 – 15.05	APPLIED SCIENCE	GEOLOGY		HUISH 30 Independent Study	GEOLOGY
15.05 – 15.10	BREAK TIME		SPORT ENRICH	BREAK TIME	(Lesson finishes 15.05)
15.10 – 16.40	PHYSICAL EDUCATION			APPLIED SCIENCE	

TUTORIALS

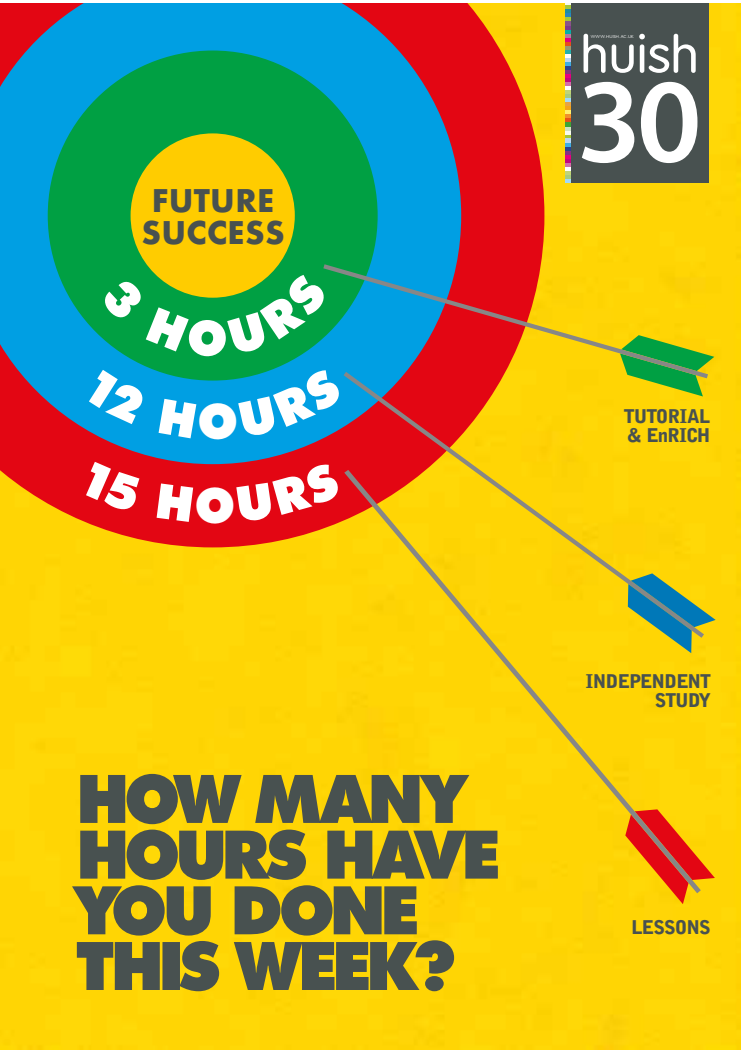


Our specialist Tutor team will support you both with your academic pursuits and your general wellbeing. Your Tutor will be someone you can speak to about any matter related to college, or from your life outside Huish. They will guide you, helping you to achieve your goals.

Tutorial sessions focus on your wider personal development, including Health & Wellbeing, Study Skills, Progression and Monitoring & Reflection.

WHAT IS HUISH 30?

The Huish 30 represents the minimum number of hours you need to commit to college-related activities each week to ensure that you perform at your best. The 30 hours break down to:



- 15 hours spent in lessons. High attendance is directly linked to excellent results
- 12 hours on independent study, preparing you for your classes and completing set tasks and course assessments. One session is allocated in your timetable
- 3 or more hours in EnRICH and personal development activities, including your weekly tutorial.

The level of independent study required at college is significantly different to school and we will support you to manage your time effectively. Your timetable is designed so you can complete much of your independent study within the college day if you wish to. Your tutor and teachers will guide you on effective study techniques and share the latest educational research on high-impact revision strategies.



EnRICH

Turn the page to discover our EnRICH programme; these exciting opportunities are open to all students and give you the chance to explore your interests and build a greater variety of skills whilst you're with us.

huish EnRICH

PROGRESSION & EMPLOYABILITY | LIFE SKILLS | COMMUNITY & CHARITY | HEALTH & WELLBEING

EnRICH supports your Progression & Employability, Life Skills, Community & Charity, and Health & Wellbeing.

You will participate in lessons, tutorials and through our careers programme. Activities range from trips and visiting speakers to workshops and competitions.

Students value the skills, knowledge and fun that EnRICH provides!



PROGRESSION & EMPLOYABILITY



LIFE SKILLS



COMMUNITY & CHARITY

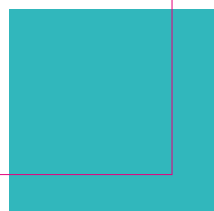


HEALTH & WELLBEING

HERE IS JUST A SELECTION OF WAYS YOU CAN GET INVOLVED:

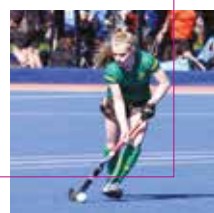
EnRICH DAYS

Lessons are suspended on EnRICH days so everyone can participate in fun activities. It's a great chance to meet people and try something new!



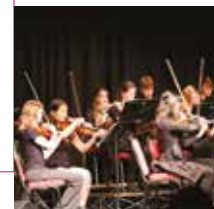
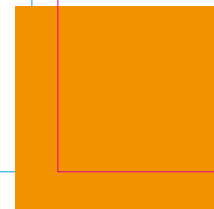
SPORT

Sport can play a major role in your life at Huish. Play for fun with Huish Sport Active, train and compete with Huish Sport Extra, or roar for the Huish Tigers Academy (Rugby/Basketball). We partner with Somerset Cricket Foundation and Bristol Bears Rugby and work hard to support athletes to thrive both academically, and in their sport.



MUSIC AND PERFORMING ARTS

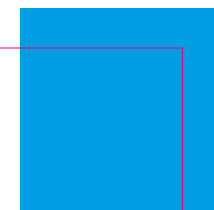
A variety of choirs and ensembles are on offer, including Orchestra and Choir. Specialist groups include Jazz Combo, Rock Choir, String Group, Samba Drumming and smaller ensembles. As well as regular concerts, you can act, sing, dance or assist with stage crafts in our theatre production.



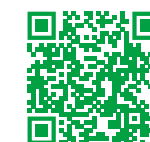
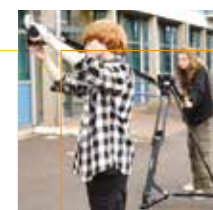
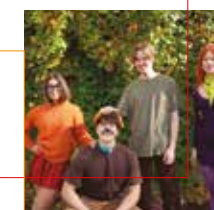
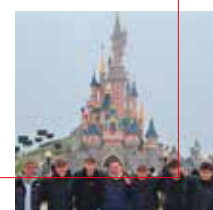
THE DUKE OF EDINBURGH'S AWARD

DofE is a life-changing experience. It is a tool to develop essential skills for life and work and a recognised mark of achievement, respected by employers.

SOCIETIES



We have a wide range of academic and social clubs, alongside activities that focus on your wellbeing. Many groups are student-led, so if you have a hobby that you would like to share, it is easy to set up an activity.



Academic EnRICH is specifically for students aspiring to study at the UK's leading universities.

The curated programme goes beyond the curriculum, offering experiences that deepen your understanding of university admissions, sharpen your critical thinking, and provide super-curricular and extracurricular opportunities.

You will benefit from:

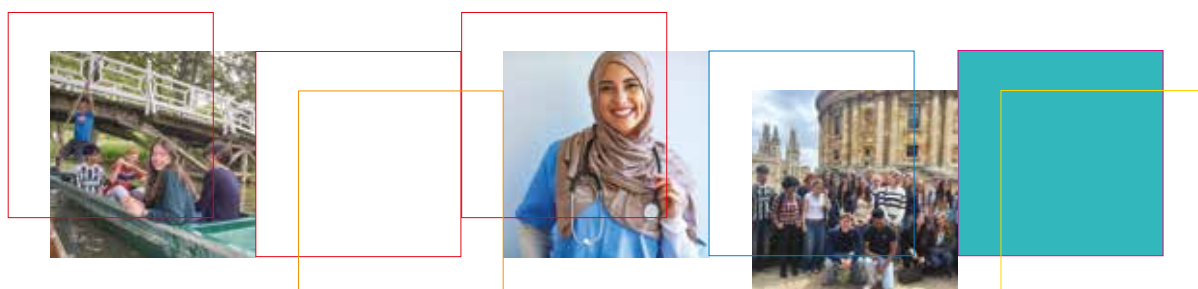
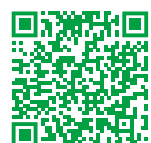
- A vibrant academic community; you'll collaborate with like-minded, intellectually curious peers through lessons, trips, and events
- Specialist tutoring that builds the knowledge, skills, and strategies you need to navigate the admissions processes of prestigious universities
- Enhanced applications through the development of critical thinking and engagement with super-curricular activities
- Insights from successful Huish alumni who achieved their academic aspirations
- University comparisons through campus visits and talks by guest speakers
- Exclusive academic opportunities, including mentoring, tutoring, trips and events only available to Academic EnRICH participants.

MEDICAL CAREERS ACADEMY (MCA)

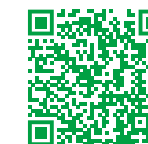
This specialist strand of Academic EnRICH supports those considering Medicine, Veterinary or Dentistry degree programmes.

MCA learning opportunities include:

- Support choosing the most appropriate courses and institutions
- Recommendations for, and support with, super-curricular activities
- Preparation for the University Clinical Aptitude Test (UCAT) for Medicine and Dentistry admissions
- Debates on medical ethics, relevant scenarios and topical affairs with experts and like-minded peers
- Seminars from guest speakers, including university lecturers, healthcare professionals, and Huish alumni
- Interview preparation, including both traditional and multiple mini-interviews (MMIs), delivered by practising medical professionals
- Advice and assistance in securing relevant work experience to deepen your understanding of a profession.



CAREERS AND PROGRESSION



Our Careers and Progression Team will provide you with impartial information, advice, and guidance. The team includes a Level 7 Careers Advisor, Student Engagement Officer and Progression Advisers. If you require advice before choosing your Study Programme then contact us – careers@richu.ac.uk.

Through careers-themed tutorials and presentations, you'll be encouraged to explore your options. You will have access to online resources such as Unifrog and a Careers & Progression padlet. These resources ease the research process and provide clear, up-to-date information.

Your Progress Tutor will be the initial point of contact for advice, with careers embedded into the curriculum and tutorial sessions. You can also book meetings with our team for guidance on:

- | | |
|--|---|
| ■ Apprenticeships – Degree, Higher, Intermediate | ■ Career choices |
| ■ University and degree subject choices | ■ CVs, covering letters and application forms |
| ■ Overseas universities | ■ Employment locally and nationally |
| ■ Higher education finance advice | ■ Job interview practice |
| ■ UCAS support – including early deadline | ■ Work placements and work experience |
| ■ Gap years | ■ Changes to your Study Programme. |

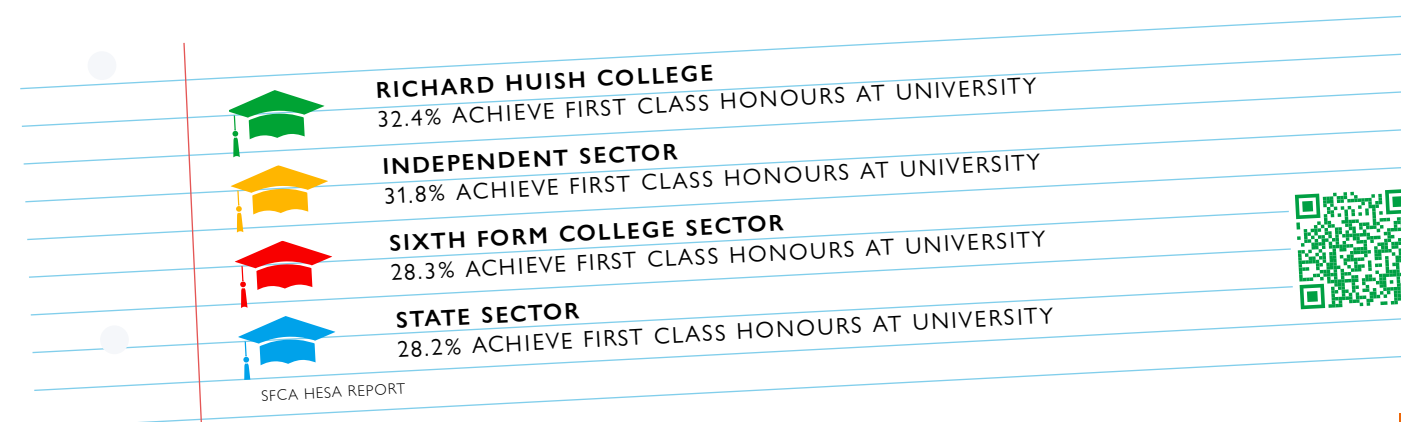
A variety of careers events are arranged including trips to the University and Apprenticeship Search Event and University Open Days. In addition, each curriculum area provides work-readiness activities. These include talks from professionals, industry visits, subject conferences, work experience, university visits and workplace projects.

Our end-of-year 'CareerFest' features inspirational speakers, university talks, a fair of over 70 exhibitors, local employer forums, and fun festival activities including a photobooth, DJ, refreshments, and more.



HUISH STUDENTS ACHIEVE EXCEPTIONAL OUTCOMES AT UNIVERSITY

Studying at Huish allows access to the world's leading universities and gives you excellent preparation for success when you are there. Huish students go on to perform exceptionally well at university, outperforming the majority of other providers.



LEARNING SUPPORT AND MENTAL HEALTH & WELLBEING

LEARNING SUPPORT

All have access to Learning Support through short-term, targeted study skills interventions delivered on a 1:1 basis or as a small group. We will work with you to achieve your potential and offer individualised support for students with a learning difficulty, medical condition, special educational need or disability (plus those with an Education Health Care Plan).

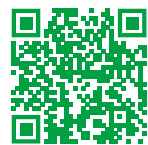
learningsupport@richuish.ac.uk

MENTAL HEALTH AND WELLBEING

We offer support for your mental health and wellbeing to help you be successful in your academic studies. We connect with a variety of external agencies in addition to the following services within Huish:

- Mental health and wellbeing advice and support
- Wellbeing enrichment opportunities
- Lesbian, Gay, Bisexual, Transgender, Questioning and Friends support group (LGBTQ+)
- Sexual health advice through Somerset Wide Integrated Sexual Health service (SWISH) and the C-Card service.

wellbeing@richuish.ac.uk

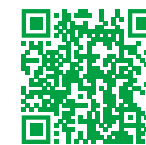


TRAVEL AND BURSARY

FINANCIAL SUPPORT

We have a range of bursaries and grant schemes available including our Huish Travel Contribution, Discretionary Bursary, Vulnerable Bursary and Free College Meals.

Full details are available on our website or you can contact bursary@richuish.ac.uk.



TRAVELLING TO COLLEGE

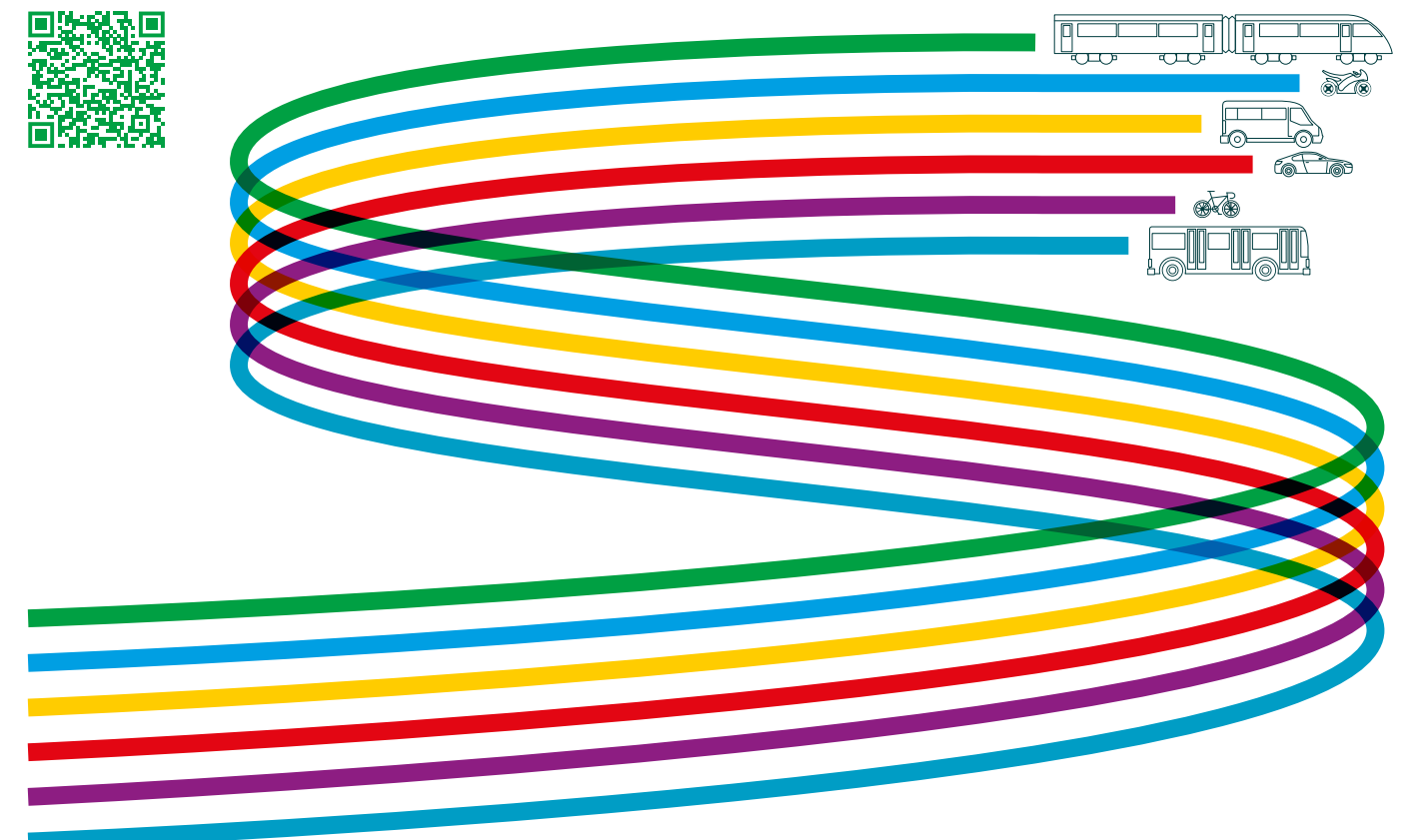
We encourage you to walk, cycle and lift share where possible. The campus has cycle racks and connecting paths that make riding or walking to campus easy for local students and there are a small number of dryers available for drying wet weather gear.

There is an extensive network of public buses which serve Huish, and a permit car park. We also operate a free minibus shuttle service between Taunton train station and the campus.

Financial support is available for ALL students travelling by public transport.

We recommend using www.travelinesw.com and bustimes.org to plan your journey.

Discover more about cycle schemes, parking and transport options on our website.



FACILITIES

We regularly invest in our equipment and facilities to ensure you can learn within bright, modern environments equipped with the industry-standard technology you'll be using in the future.

MOCK COURTROOM

Last year, Huish opened the first mock courtroom on a South West campus to house Huish Law School.

SPORT

Our 3G pitch was added to our Sports provision in 2023, following the past development of Ash Meadows Rugby Pitch, a cross-country circuit and Sycamore Sports Hall & Gym.

ASPEN MUSIC CENTRE

This centre includes 2 recording studios with RedNet Technology, 2 soundproof live rooms, practice rooms, a secure instrument store, our music classrooms and a Mac suite. A perfect home for aspiring artists and always a lively hub of activity.

MAPLE VISUAL ARTS AND COMPUTING BUILDING

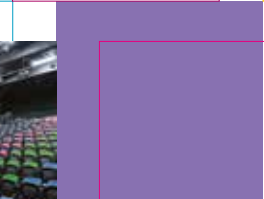
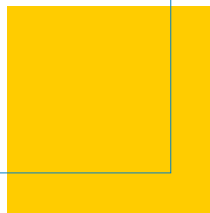
This £3 million building includes computer suites with state-of-the-art software for those pursuing ICT careers and an art studio and graphics suite where your creativity can thrive.

HUSH THEATRE AND PINE STUDIOS

We have large rehearsal spaces and a 234-seat theatre equipped with professional lighting and sound desks providing a grand performance venue for our musicals, concerts and other events.

CAFÉS AND STUDY SPACES

There are multiple food outlets where you can relax with your friends and a variety of study spaces so you can find your preferred study environment.



BOARDING



EXPAND YOUR HUISH EXPERIENCE

As members of the Boarding Schools Association (BSA) State Boarding Forum, we are proud to offer a unique boarding experience. We are one of only two State Sixth Form Colleges in England to offer an accommodation option and Oak House is rated outstanding by Ofsted.

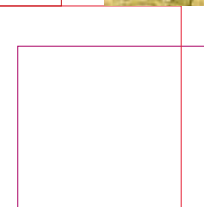
Our reputation for academic excellence and strong pastoral care attracts students from across the UK and internationally. This diverse group of young people enriches our Huish community.

Oak House offers you a taste of independent living in preparation for university life and beyond. The house is very close to our campus, allowing easy access to college life, both academically and socially.

You can board full-time or on a flexi-board basis. If your journey to Huish is long or you simply enjoy boarding, Oak House could be just what you need.

Boarding places are allocated on a first-come, first-served basis, so we recommend applying early to avoid disappointment. Your room will be secured once you have paid your deposit.

For more information email boarding@richuish.ac.uk.



APPRENTICESHIPS

If you are ready to start employment you can choose an apprenticeship as your training option.

You learn skills on the job to earn accredited qualifications and can build on your qualifications throughout your career.

Apprenticeships include taught sessions on campus where our Tutors support you to develop knowledge of your employment sector.

EDUCATION APPRENTICESHIPS

If you are looking to inspire and nurture others in a role within a nursery or school setting, contact our team to find out about our apprenticeships within teaching and early years environments.

ACCOUNTANCY APPRENTICESHIPS

Our AAT apprenticeships provide you with internationally recognised qualifications ready for a career in accountancy or finance.



COURSES

LEVEL 2



Visit our website to see the Level 2 Pathway Study Programmes

A LEVEL



Art
Biology
Business
Chemistry
Classical Civilisation
Computer Science
Economics
English Language, Linguistics & Creative Writing
English Literature
Environmental Science
Film Studies
French
Geography
Geology
German
Graphic Design
History (Early Modern)
History (Late Modern)
Law
Mathematics
Mathematics (Further)
Music
Philosophy, Religion & Ethics
Photography
Physical Education
Physics
Politics
Psychology
Sociology
Spanish

VOCATIONAL QUALIFICATIONS



Applied Science
Business, Marketing & Management
Computing: Application Development
Computing: Data Analytics
Criminology
Drama
Early Childhood Development
Health & Social Care
Media, Film & Advertising
Media Industry & Production
Medical Science
Music Performance
Music Production
Music Performance & Production
Sport, Exercise & Coaching
Uniformed Protective Services

ADDITIONS TO STUDY PROGRAMME



Extended Project Qualification
French (AS Level)
German (AS Level)
Mathematics (Core)
Music (AS Level)
Spanish (AS Level)

APPRENTICESHIPS



ACCOUNTANCY (AAT)
L2 Accounts/Finance Assistant
L3 Assistant Accountant
L4 Professional Accounting Technician

EDUCATION
L2 Early Years Practitioner
L3 Early Years Educator
L3 Teaching Assistant

APPLIED SCIENCE

SINGLE VOCATIONAL

This course is for students seeking a broad grounding in all three of the major science disciplines: Biology, Chemistry, and Physics. You'll get the opportunity to carry out a range of practical work within each discipline and develop skills used in a range of science industries. The course offers a varied approach to assessment; you complete external examinations in your first year and coursework in your second year. Past students have gone on to study courses like Paramedic Science, Marine Biology and Physiotherapy.



BUSINESS

A LEVEL

In Business you will learn everything there is to know about the business world in a high work ethic environment, where you get the chance to work both independently and as a team. There is a strong focus on contemporary business examples in lessons, such as Starbucks, Uber and Amazon and you will analyse a range of topics from localisation to innovation. Studying Business will give you key skills and knowledge that are extremely sought after by employers, universities, apprenticeships, or even when starting your own business.



ART

A LEVEL

You will explore a variety of practical techniques across a range of 2D, 3D and digital media, while developing the skills to produce bold and expressive responses to a range of contemporary and personal themes. Learning to research, explore, and respond to the work of artists from historical examples to the most contemporary approaches, is a key part of the course. The combination of coursework and exams is perfectly suited to those who enjoy assignment-based assessment.

You can progress onto a Foundation Diploma, Art & Design Degree, or anything where an understanding of visual language is required.



BUSINESS, MARKETING & MANAGEMENT

SINGLE/TRIPLE VOCATIONAL

This course provides an insight into many different sectors in business including Marketing, Financing & Accounting, Human Resources, Recruitment, Event Management, Retail, International Business and Economics. Many units are assessed through written assignments, roleplays, presentations and involvement with local employers, which enable you to develop a range of skills, whilst other units are assessed via external examinations. You will be provided with applied information and knowledge about the world of business to help you understand how businesses operate on a local, national and global basis.



BIOLOGY

A LEVEL

Biology will give you a fascinating insight into a diverse range of topics. You start by looking at molecules and cells and build up to tissues, organs and organ systems in both plants and animals and then to full ecosystems. Carrying out lots of practical work makes learning enjoyable and really helps your understanding, for example, dissections allow you to see the theory you have been learning in real life. Biology opens up a wide range of career options such as Medicine, Marine Biology and Conservation.



CHEMISTRY

A LEVEL

Chemistry will develop your problem-solving skills and help you explain complex phenomena. You will delve into the periodic table, use maths to understand energetics and explore organic chemistry in depth. You'll get an insight into the importance of chemistry from environmental chemistry through to the development of pharmaceuticals. You'll use analytical techniques that could be used in forensic and materials science. Chemistry opens pathways into medicine, engineering and a wide range of scientific pathways and is also highly regarded by other fields such as law and finance.



CLASSICAL CIVILISATION

A LEVEL

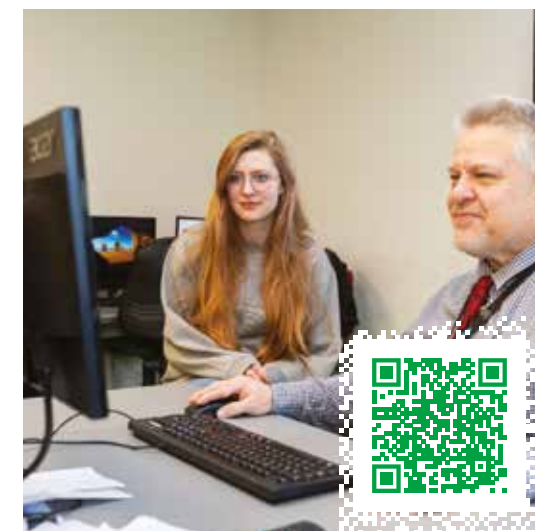
Classical Civilisation is the study of Ancient Greeks and Romans, through their literature, art, history, politics and myths. The focus is mostly on the Ancient Greeks, although it does include a brief look at the Roman Emperor Augustus. We look at Greek art, read the Iliad by Homer, and look in-depth at the beginnings of democracy in Athens. We read Virgil's Aeneid and the mythological foundations of Rome. This is an exam-based subject with no coursework and lots of reading. We also go on trips to the British Museum, the Ashmolean at Oxford, and a residential trip to Greece.



COMPUTING: DATA ANALYTICS

SINGLE VOCATIONAL

This in-depth course teaches you key skills in analysing data, big data, machine learning, storing and modelling data techniques. These will prepare you for progression to high demand careers such as Data Analysis, Database Management, Data Scientist, Business Analyst, Data Engineer, and Marketing Analyst. You could do this via university, sponsored degrees or employment. You will also have the opportunity for enrichment in areas such as building a PC, 3D printing and networking.



COMPUTER SCIENCE

A LEVEL

Computer Science provides you with an understanding of the mathematical, scientific and engineering principles that underpin the computer systems that we use today. From the very first lesson students become programmers and problem solvers, and we introduce programming concepts through a variety of paradigms including procedural, object-oriented and functional. You will study algorithms, binary representation of data, networks and Boolean logic, among many other topics. Computer Science is a wide-ranging discipline, and you will develop skills that support access to a range of computing related degrees or apprenticeships, and that support other subjects.



CRIMINOLOGY

SINGLE VOCATIONAL

Like it or not, crime is all around us. During this course, you will study types of crime, theories of criminal behaviour and the process from crime scene to courtroom and punishment. You'll engage in thorough examinations of a range of real-life criminal cases and apply various criminological theories to them to advance your understanding of how crime operates in society and the impact that it has. This course is assessed through a mixture of examinations (50%) and controlled assessment (50%). You will gain a variety of transferrable skills required for your next steps.



COMPUTING: APPLICATION DEVELOPMENT

SINGLE VOCATIONAL

This in-depth course will prepare you for careers that are in high demand. Software development, software engineering, software testing, cyber security, and creative fields, such as games development, are just some of the areas that you could enter via university, sponsored degrees or employment. You will learn how to develop applications including games design, software development and web design, which will give you high level skills for these key shortage areas. You will have the opportunity for enrichment in areas such as building a PC, networking, 3D printing, and 3D virtual reality development.



DRAMA

SINGLE VOCATIONAL

This vocational course embeds practical work which is fun, engaging and industry relevant. It allows you to grow as an actor and theatre maker. You will practically study a range of practitioners and set works which will in turn inspire you to create your own theatre. The course includes an element of coursework based on industry briefs and you will learn skills that you will use again and again in the world of Performing Arts. Assessment is based on practical work and coursework – there are no unseen exams.



EARLY CHILDHOOD DEVELOPMENT

SINGLE VOCATIONAL

This course provides the skills and knowledge needed for careers in early childhood education and care. It combines theory with hands-on experience, allowing you to apply your learning through work placements and project-based assignments. The qualification focuses on the development, learning, and wellbeing of young children, preparing you for roles in settings such as nurseries, schools, and early years services. You will study child development, safeguarding, communication with children, and professional practice in early childhood settings.



ENGLISH LITERATURE

A LEVEL

This course is for those who enjoy a variety of literature and literary discussion. You'll develop your appreciation of modern and older texts and skills in reading and detailed written analysis. We study single and comparative texts supported by contextual information, leaving room for your ideas and interpretations. Textual debates help you gain confidence with your written analyses. Using varied critical perspectives is important and you will be encouraged to widen your interpretation of poetry, prose and drama (including Shakespeare) from different literary periods. A non-exam unit involves independent prose reading and comparison where you can develop personal literary interests.



ECONOMICS

A LEVEL

It is an exciting time to study Economics. Whether you are concerned about the cost of living or global warming, the study of Economics is becoming increasingly important as we consider the impact of our choices on each other and the environment. This course is developed with up-to-date content so you can relate what you are learning to the world around you locally, nationally and globally. Through studying Economics you will develop a wide range of skills including the ability to analyse data, think critically and make informed decisions.



ENVIRONMENTAL SCIENCE

A LEVEL

Environmental Science is a fascinating subject that explores all aspects of the natural world, providing explanations to many of the world's pressing environmental problems. The course is varied with a wide range of teaching approaches used including classroom-based learning, lab experiments, practical investigations and interesting field trips. This subject can really change your perspective on the world and provides a great base of knowledge and skills for a huge range of career paths. This versatile course combines particularly well with other Science and Earth Science subjects.



ENGLISH LANGUAGE, LINGUISTICS & CREATIVE WRITING

A LEVEL

This course deepens your understanding of how language works in the real world and equips you with analytical, communication and critical thinking skills. We explore how language shapes identity, how children acquire language, and how language changes over time. You learn to deconstruct texts, from social media posts to political speeches, examine how language is used to influence, persuade, and represent different groups, and develop your fictional and non-fictional writing skills. Future careers include journalism, law, linguistics, teaching, or media.



EXTENDED PROJECT QUALIFICATION

CERTIFICATE

Studying the EPQ supports your personal aspirations for higher education and career development and gives you the opportunity to study an in-depth topic of your own choice. It will be available to you in your second year and you can choose to complete either a 5,000 word written report or create an artefact or production demonstrating the learning and evaluation of new skills. You will improve yourself as a critical, reflective and independent learner, developing skills creatively and demonstrating initiative, decision making and enterprise.



FILM STUDIES

A LEVEL

This course allows you to understand important developments in history, society and culture through the medium of cinema. From Silent Cinema to Contemporary Hollywood, the films we study offer rich and interesting analysis. They represent different periods and alternative representations of society. The course incorporates creative production, turning theory into practice by making a short film or writing a screenplay. You will develop a range of transferable skills including creative and critical thinking, textual analysis, communication, research skills and technical competencies.



GEOLOGY

A LEVEL

We learn how to read the ancient history of the planet. You'll learn all the theory, techniques and skills you need to turn a lump of rock into a story of ancient continents, long extinct life, volcanic eruptions and eons of slow and infinitely patient time. The syllabus is varied and includes five field trips. If you prefer to learn through drawing, experimenting, interpreting maps and being out in the field then this subject is for you!



FRENCH

A LEVEL OR AS LEVEL

These courses improve your understanding of, and fluency in, French, alongside your knowledge of the culture, society, and history of French-speaking countries. You study topics as diverse as volunteering, crime, and contemporary music in Francophone countries. Multiple resources are available, such as Kerboodle, TV5 du monde, and an opportunity to speak one-on-one with a native speaker weekly. The AS Level option is a one-year course and is only available as an additional subject to your Study Programme. Nous avons hâte de vous voir à Huish bientôt!



GERMAN

A LEVEL OR AS LEVEL

Choosing German will expand your communication skills and allow you to explore aspects of German culture, history and society, with insights into youth culture, the digital world, art, architecture, festivals and traditions. A wide range of resources are available such as Kerboodle and Deutsche Welle. You will speak one on one with a native speaker each week which will be beneficial to your fluency. The AS Level option is a one-year course and is only available as an additional subject to your Study Programme. Wir hoffen, Euch dort zu sehen!



GEOGRAPHY

A LEVEL

Geography is a unique blend of human and physical modules that help you understand the world you live in. It uses past and current world events and fascinating topical case studies to enrich your learning. The course includes field trip opportunities and is assessed using both coursework and exams. The coursework allows you to research a geographical topic that you are interested in. Geography will provide you with an all-round knowledge of the world and provides a range of future opportunities.



GRAPHIC DESIGN

A LEVEL

A Level Graphic Design will provide you with a broad introduction to traditional art-based and digital design processes. You will learn about the historical and contemporary influences within the design industry. Over the course, you will be set themed assignments and live briefs to help you build a creative and professional portfolio of illustration and graphic design. You will be offered the opportunity to visit national and international places of interest for research purposes.



HEALTH & SOCIAL CARE

SINGLE/TRIPLE VOCATIONAL

Studying Health and Social Care is a good start for anyone who would like a career in which they support and care for others. A range of topics are covered in this subject which will enable you to understand the needs of individuals who use services and the roles and responsibilities of Health and Social Care professionals who support them. On the Triple Vocational programme, classroom-based learning is supported by work placements where you will have the opportunity to apply your knowledge and understanding in environments such as care homes, day services, hospitals and nurseries.



LAW

A LEVEL

Huish Law School can propel you to a higher-degree apprenticeship, university, or a range of legal careers. In our mock courtroom, we cover Criminal, Tort and Contract Law, Law Making, and the English Legal System. You'll study theory and concepts of law, looking at the philosophical ideas that underpin our legal system. We also explore the relationship between law, justice and morality. You can stretch yourself further through EnRICH with Huish Mooting and the Huish Law Society.



HISTORY EARLY MODERN

A LEVEL

Early Modern History really captures how the world works. You will look at Tudor England and the French Revolution. The skills you develop in History are highly valued by universities and employers making it a great choice for students thinking about a wide range of careers. The world looks different after studying History!



MATHEMATICS

A LEVEL

If you like puzzling things out and solving problems where solutions are not immediately obvious, you could enjoy doing Mathematics. It is a subject that really "exercises the brain", and Maths students learn to see through things in a logical, powerful way. The course covers a variety of mathematical topics, some of which will be familiar like algebra and algebraic graphs, whilst others are likely to be new, like calculus and logarithms. You will study 'pure' mathematics much of the time but will also learn to apply abstract mathematical methods to mechanical and statistical problems.



HISTORY LATE MODERN

A LEVEL

Late Modern History really captures how the modern world was made. It's a fascinating and vibrant subject looking at the British Empire from 1857 to 1967 and the Cold War. History develops key skills such as attention to detail, researching, time management and organisation. These abilities are highly valued by universities and employers, therefore this subject is an ideal choice for multiple different career routes such as the Civil Service, Journalism and Banking.



MATHEMATICS CORE

CERTIFICATE IN QUANTITATIVE REASONING

Core Maths will develop and enhance your real-life mathematical skills. The emphasis is on how and when to apply new and existing techniques to problems that arise in the workplace, in education, in personal finances and in everyday life. You will build on GCSE skills and learn new topics, such as mathematical modelling, spreadsheets, normal distribution, log scales, medical screening, scams and much more. Core Maths complements the Sciences, Earth Sciences, Business, Psychology and Economics. This one-year course can be added to any Study Programme. You will gain UCAS points equivalent to an AS Level.



MATHEMATICS FURTHER

A LEVEL

A challenging but fascinating course for committed and very able mathematicians with a deep interest in the subject. You must study A Level Mathematics and two other subjects alongside this course. Studying this qualification can give you a “head start” on degrees with high mathematical content. Further Mathematics both builds on and broadens the range of ideas met on the Maths A Level, for example, topics like differential equations and functions are extended, whilst completely new branches, such as complex numbers and matrices, widen your knowledge of this vast subject.



MEDICAL SCIENCE

SINGLE VOCATIONAL

This course explores how the human body functions in health and disease, how infections spread, and how to analyse health data. You'll develop valuable lab skills and learn how medical research supports diagnosis and treatment. Alongside core units in physiology, health issues and microbiology, you'll study an additional specialist topic such as biomedical science or human reproduction. It is ideal for those considering healthcare or science-based degrees.



MEDIA, FILM & ADVERTISING

SINGLE VOCATIONAL

This vocational course gives you the chance to learn a range of skills in media production. In preparing for the Media Products and Audiences exam, you will learn about all stages of film production and apply what you've learnt practically—planning, scripting, shooting and editing a sequence of your own feature film. Work for the Pre-Production and Planning exam will give you skills across all media sectors. You will put these into practice by planning, pitching, creating and editing an advertising campaign.



MUSIC

A LEVEL AND AS LEVEL

If you already read music, play an instrument or sing, a Music AS or A Level will help you increase your practical skills and academic knowledge of music. You will work towards a solo recital, submit a composition portfolio, and undertake a written exam on Classical, Pop, and Modern areas of study. Your creative and listening skills will be expanded, preparing you for Higher Education or a career in performing, composing or education. The one-year AS Level option is only available as an additional subject to your Study Programme.



MEDIA INDUSTRY & PRODUCTION

TRIPLE VOCATIONAL

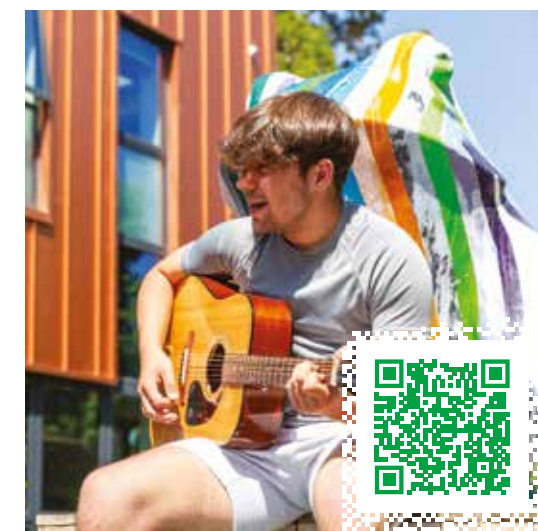
Do you love films, TV, social media, advertising, special effects, animation, music videos, radio and being creative? This course will prepare you for a career in the media, building practical skills and knowledge that can be used in whatever area interests you most. The course is a balanced combination of exams and coursework, which includes individual and group work creating media products. You could go on to university, a job, or an apprenticeship to become an Editor, Camera Operator, Director, Sound Recordist, Radio Presenter, Graphic Designer and more.



MUSIC PERFORMANCE

SINGLE VOCATIONAL

If you are after a really practical subject that gives you real-life experience in the music industry, this is the one! You will have opportunities to perform with different bands or as solo artists in venues around the area and enjoy lectures from people in the industry like Session Musicians, Band Managers, Agents and Studio Engineers. Most excitingly, you will learn to produce and market your own music and record it in our amazing studio facilities. You will learn new song writing techniques and hopefully everything you need to be successful in the industry.



MUSIC PRODUCTION

SINGLE VOCATIONAL

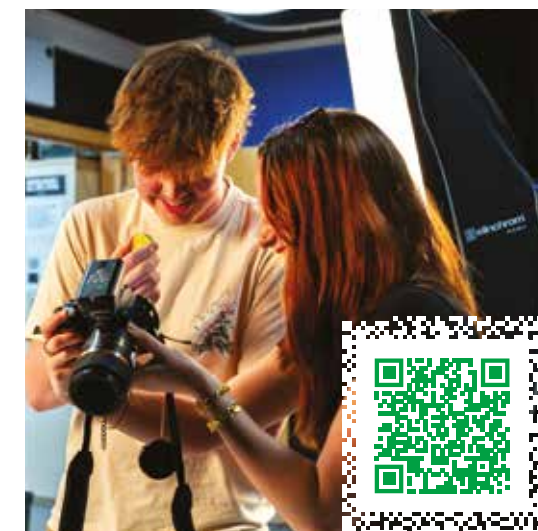
This course is one of the most creative on offer. In Year 1, you'll get to grips with the basics of music technology and start producing your own music (or covers of your favourite songs!). You'll learn how to build beats, use samples, program your own synths and create projects from the ground up. In Year 2, you will produce a portfolio of work including remixes, film compositions, original pieces, and recordings. You will also learn how to engineer at our gigs.



PHOTOGRAPHY

A LEVEL

A Level Photography explores a variety of practical techniques across both digital and traditional processes. You will develop the skills to produce bold and expressive responses to a range of contemporary and personal themes. Learning to research, explore and respond to the work of photographers from historical examples to the most contemporary approaches is a key part of the course. The combination of coursework and exams is perfectly suited to those who enjoy more assignment-based assessment. Every organisation now pays great attention to their visual output, so photographers have never been in greater demand!



MUSIC PERFORMANCE & PRODUCTION

TRIPLE VOCATIONAL

Music Performance and Production is an innovative, creative and practical course which helps you achieve your best and develop your creative practice, in an assisted and well-equipped environment. You will cover a wide variety of modules concerning everything from songwriting and music business to remixing and live sound, with lots of opportunities to showcase and receive feedback upon your original creative work. Overall, the course provides a well-structured, credible, and fun way to collaborate and realise creative ideas and projects.



PHYSICAL EDUCATION

A LEVEL

This course combines both physical and academic challenges to give you a fantastic insight into the world of sports performance. You will learn about human anatomy and physiology, how to train smarter, the importance of psychology in sport and the influence that modern technology is having on sports performance. You will also investigate topics such as the political exploitation of the Olympic games and the evolution of sport from pre-1850 to now with sociocultural themes. There are also plenty of Sport EnRICH opportunities available alongside the course.



PHILOSOPHY, RELIGION & ETHICS

A LEVEL

In this subject, there are so many big ideas to discuss and explore. We think about the nature of existence, knowledge, and belief; for example, we analyse arguments for the existence of God. Ethics involves considering what is 'good' when it comes to actions and how people make moral decisions. In 'Developments in Buddhist Thought', we learn how the religion began and spread, and how Buddhism believes we can overcome the suffering that life involves. We use a range of learning opportunities with lots of great class discussions, as well as writing, reading, and taking trips.



PHYSICS

A LEVEL

A highly valued qualification in A Level Physics will give you a deeper understanding of the world, from the super small to the incomprehensibly large. There will be something in the course that interests you. You will work with classmates in modern labs and learn to use new equipment. The syllabus helps develop skills in experimental work, research and data analysis, and is broad enough to enable you to keep your options open for specialisation at university. Physics will allow you to apply your mathematical skills to solve a range of real-world problems.



POLITICS

A LEVEL

Politics is for anyone who has, or is prepared to develop, a keen interest in current affairs. The course focuses on the contemporary politics of both the UK and the USA, as well as the structures of government and the ideas which form the basis of political decision making. You may have the opportunity to visit Parliament and the UK Supreme Court. With the political landscape constantly changing, it is a fast-moving subject where new developments are discussed on a regular basis, keeping it relevant and stimulating.



SPANISH

A LEVEL OR AS LEVEL

By choosing Spanish, you will be enriched with not only the language, but the culture too. You will have the opportunity to immerse yourself further with a trip to Salamanca where you will stay with a Spanish family. To develop your skills, we offer one-to-one sessions with a native speaker. The course is assessed through a mixture of speaking, reading, writing and listening, which you will practice frequently. Spanish combines well with all subjects and broadens your prospective employment and travel endeavours. The AS Level option is a one-year course and is only available as an additional subject to your Study Programme.



PSYCHOLOGY

A LEVEL

You will explore the fascinating world of human behaviour and the scientific study of the mind. This course covers a range of topics from the structure and function of our brains to understanding complex conditions such as schizophrenia. It has the perfect combination of scientific content and essay-based exams. You will get to plan your own research, preparing you for further opportunities beyond college such as studying Psychology or going down the many other career pathways that this course prepares you for.



SPORT, EXERCISE & COACHING

TRIPLE VOCATIONAL

This course is about gaining hands-on transferrable skills in leadership, coaching and officiating. It will equip you with the essential knowledge required for future study or a career in sport. It offers you the chance to study on a more practical level whilst learning about exercise and the physiological effects on our anatomy. You will explore how nutrition affects our health and performance and how to test for fitness. It will give you an excellent insight into the different career paths sport has to offer.



SOCIOLOGY

A LEVEL

The biggest strength of Sociology is its unwavering relevance to contemporary society. From theory to issues like media and crime, Sociology is constantly evolving. You'll take part in evidence-based discussions about everyday topics which provide a new way of thinking about the world around you. Last year, we discussed BLM, the #MeToo movement, types of social media and their impact on society. What you learn in the classroom will stay with you for the rest of your life and you will view the world differently. Sociology also provides highly transferrable skills for progression.



UNIFORMED PROTECTIVE SERVICES

TRIPLE VOCATIONAL

This course gives you a chance to develop the skills and essential knowledge required for a successful career in the Military, Police, Fire Service or other fields of uniformed services. This vocational course consists of 13 core units which are assessed through a mixture of external examinations and internally assessed coursework. You will have the opportunity to take part in a range of teamwork and leadership activities on-site and on residential trips led by representatives of the Uniformed Protective Services.



INDEX

A

- AAT 20
 - Academic Enrichment 14
 - Accountancy 20
 - Applied Science 22
 - Applying 39
 - Apprenticeships 20
 - Art 22
- B**
- Biology 22
 - Boarding 19
 - Bursary 17
 - Business 23
 - Business, Marketing & Management 23

C

- Careers & Progression 15
- Chemistry 23
- Classical Civilisation 24
- Computer Science 24
- Computing: Application Development 24
- Computing: Data Analytics 25
- Course Options 8 & 9, 21
- Criminology 25

D

- Drama 25
- Duke of Edinburgh's Award 13

E

- EARTH SCIENCE COURSES:
- / Environmental Science 27
 - / Geography 28
 - / Geology 29
- Early Childhood Development 26
 - Economics 26
 - Education Apprenticeships 20
 - English Language, Linguistics & Creative Writing 26
 - English Literature 27
 - EnRICH 12 & 13
 - Entry Requirements 39
 - Environmental Science 27
 - Extended Project Qualification (EPQ) 27

F

- Facilities 2 & 18
- Film Studies 28
- Financial Support 17
- French 28
- Further Mathematics 32

G

- Geography 28
- Geology 29
- German 29
- Graphic Design 29

H

- Health & Social Care 30
- History Early Modern 30
- History Late Modern 30
- Huish30 11

L

- Law 31
- Learning Support 16
- Level 2 Pathway 9 & 21

M

- MATHEMATICS:
- / Core Mathematics 31
 - / Further Mathematics 32
 - / Mathematics 31
- Media, Film & Advertising 32
 - Media Industry & Production 32
 - Medical Careers Academy 14
 - Mental Health & Wellbeing 16

MODERN FOREIGN LANGUAGES:

- / French 28
- / German 29
- / Spanish 37

MUSIC COURSES:

- / Music 33
- / Music Enrichment 13
- / Music Performance 33
- / Music Performance & Production 34
- / Music Production 34

P

- Performing Arts Enrichment 13
- Philosophy, Religion & Ethics 34
- Photography 35
- Physical Education 35
- Physics 35
- Politics 36
- Psychology 36

R

- Religious Studies 34

S

- SCIENCE COURSES:
- / Applied Science 22
 - / Biology 22
 - / Chemistry 23
 - / Physics 35
- Sociology 36
 - Spanish 37
 - Sport, Exercise & Coaching 37
 - Sport Enrichment 12
 - Student Voice 5
 - Study Programmes 8 & 9
 - Support 16

T

- Timetable 10
- Travel 17
- Tutorials 10

U

- Uniformed Protective Services 37

V

- VISUAL ARTS COURSES:
- / Art 22
 - / Graphic Design 29
 - / Photography 35

W

- What Makes Huish Special 6 & 7

APPLYING

7 STEPS TO HUISH

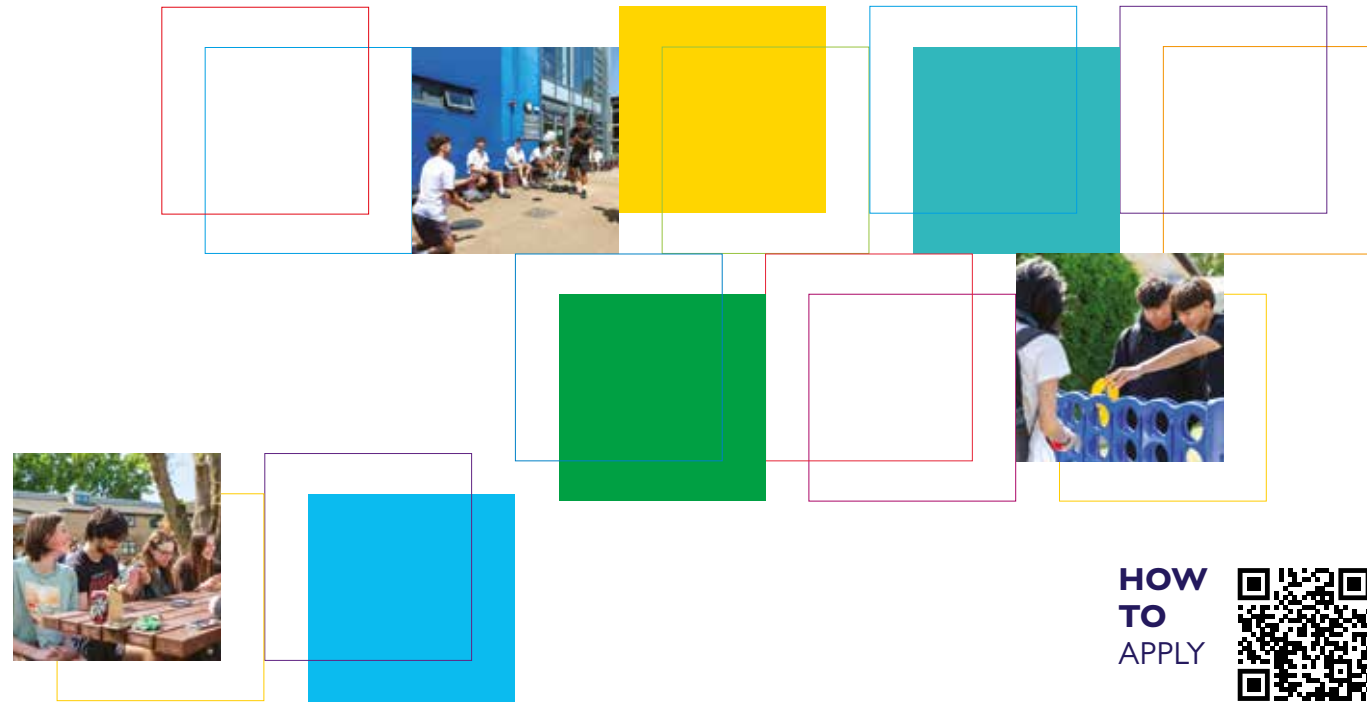
- 1 OPEN EVENTS – Join us on Saturday 11th October, Monday 13th October and Wednesday 29th April to explore the campus and meet our staff and students.
- 2 APPLY – Choose your Study Programme and complete an online application.
- 3 ADVICE AND GUIDANCE MEETING – You will be invited to an Advice and Guidance meeting where we will answer your questions and give you advice on your Study Programme.
- 4 OFFER – At your Advice and Guidance meeting you will receive a conditional offer of a place.
- 5 WELCOME TO HUISH – We will invite you to our Welcome to Huish days in July 2026, where you can trial your lessons and experience what it's like to be a Huish student.
- 6 GCSE RESULTS DAY – If you have any questions following your results, our staff will be here to help.
- 7 ENROLMENT – At enrolment you can finalise your Study Programme, get your ID badge and become an official Huish student!

OUR STANDARD ENTRY REQUIREMENTS

We have a wide range of courses available, including A Levels, vocational courses, GCSE resits, apprenticeships and professional qualifications.

- The entry requirements for a Level 2 Pathway are a GCSE profile of mainly grade 3s including Mathematics and English Language.
- The entry requirements for a Level 3 A Level or Mixed programme are at least five GCSEs at grade 9 to 4, including Mathematics and English Language. For a Triple Vocational qualification a Vocational Level 2 qualification at grade merit or above can be accepted in place of one GCSE. Some courses have higher requirements; these will be discussed with you at your Advice and Guidance meeting and your enrolment appointment.

Call us on 01823 320800, email us using admissions@richuish.ac.uk, or visit our website for further clarification about qualifications.



HOW
TO
APPLY

